

# Human CD8 alpha/CD8A Protein

Cat. No. CD8-HM18A

## Description

<b>Source</b>	Recombinant Human CD8 alpha/CD8A Protein is expressed from HEK293 with His tag at the C-Terminus. It contains Ser22-Asp182.
<b>Accession</b>	P01732-1
<b>Molecular Weight</b>	The protein has a predicted MW of 18.70 kDa. Due to glycosylation, the protein migrates to 28-35 kDa based on Tris-Bis PAGE result.
<b>Endotoxin</b>	Less than 1EU per $\mu\text{g}$ by the LAL method.
<b>Purity</b>	> 95% as determined by Tris-Bis PAGE

## Formulation and Storage

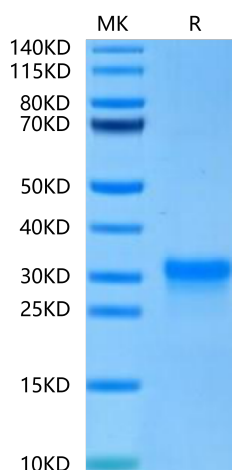
<b>Formulation</b>	Supplied as 0.22 $\mu\text{m}$ filtered solution in PBS (pH 7.4).
<b>Storage</b>	Valid for 12 months from date of receipt when stored at -80°C. Recommend to aliquot the protein into smaller quantities for optimal storage. Please minimize freeze-thaw cycles.

## Background

CD8 alpha enhances the responses of antigen-specific CTL activated through TCR through binding MHC class I, favoring lipid raft partitioning of TCR, and inducing intracellular signaling. CD8 alpha is also found on dendritic cells and rat macrophages, but whether CD8 alpha enhances responses of a partner receptor, like TCR, to activate these cells is not known.

## Assay Data

### Tris-Bis PAGE

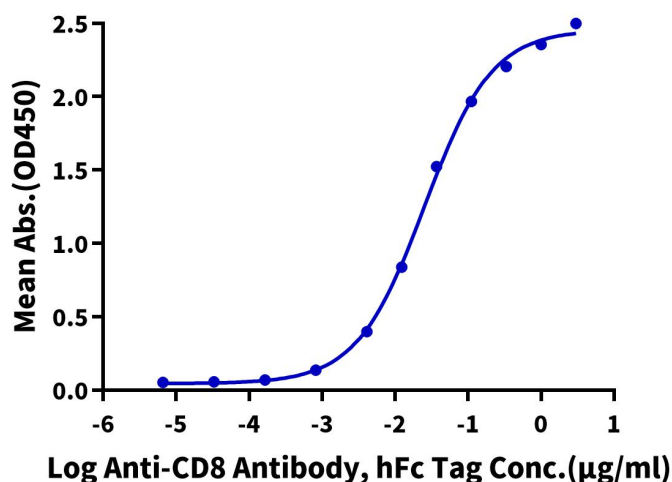


Human CD8 alpha on Tris-Bis PAGE under reduced condition. The purity is greater than 95%.

### ELISA Data

#### Human CD8 alpha, His Tag ELISA

0.1 $\mu\text{g}$  Human CD8 alpha, His Tag Per Well



Immobilized Human CD8 alpha, His Tag at 1 $\mu\text{g/ml}$  (100 $\mu\text{l/well}$ ) on the plate. Dose response curve for Anti-CD8 Antibody, hFc Tag with the EC50 of 25.2ng/ml determined by ELISA.