

Rhesus macaque CD5 Protein

Cat. No. CD5-RM405

Description

Source	Recombinant Rhesus macaque CD5 Protein is expressed from HEK293 with His tag and Avi tag at the C-Terminus. It contains Arg25-Pro375.
Accession	F6V5Q9
Molecular Weight	The protein has a predicted MW of 41.7 kDa. Due to glycosylation, the protein migrates to 55-60 kDa based on Tris-Bis PAGE result.
Endotoxin	Less than 1EU per ug by the LAL method.
Purity	> 95% as determined by Tris-Bis PAGE > 95% as determined by HPLC

Formulation and Storage

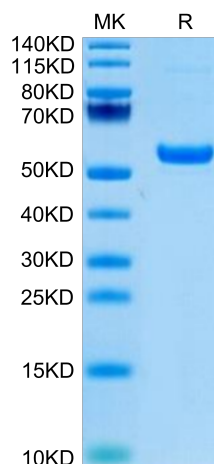
Formulation	Lyophilized from 0.22µm filtered solution in PBS (pH 7.4). Normally 8% trehalose is added as protectant before lyophilization.
Reconstitution	Centrifuge the tube before opening. Reconstituting to a concentration more than 100 µg/ml is recommended. Dissolve the lyophilized protein in distilled water.
Storage	-20 to -80°C for 12 months as supplied from date of receipt. -20 to -80°C for 3-6 months in unopened state after reconstitution. 2-8°C for 2-7 days after reconstitution. Recommend to aliquot the protein into smaller quantities for optimal storage. Please minimize freeze-thaw cycles.

Background

CD5: a type I transmembrane protein found on T cells, thymocytes, and some B cells that is a ligand for CD72 and is involved in cellular activation or adhesion; expressed in B-cell chronic lymphocytic leukemia and T-cell lymphoma.

Assay Data

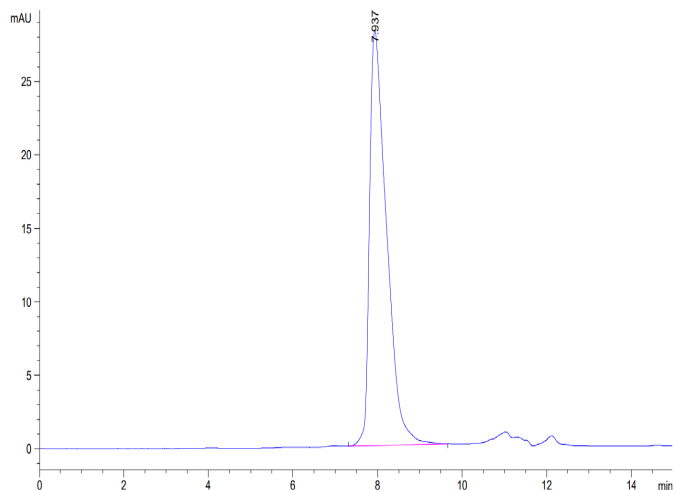
Tris-Bis PAGE



Rhesus macaque CD5 on Tris-Bis PAGE under reduced condition. The purity is greater than 95%.

SEC-HPLC

Assay Data

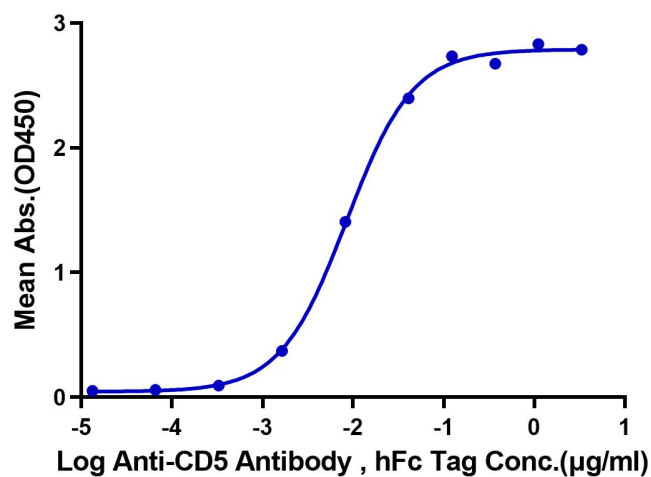


The purity of Rhesus macaque CD5 is greater than 95% as determined by SEC-HPLC.

ELISA Data

Rhesus macaque CD5, His Tag ELISA

0.1 µg Rhesus macaque CD5, His Tag Per Well



Immobilized Rhesus macaque CD5, His Tag at 1 µg/ml (100 µl/well) on the plate. Dose response curve for Anti-CD5 Antibody, hFc Tag with the EC50 of 8.5 ng/ml determined by ELISA.