

---

## CD38 Antibody, mAb, Mouse

---

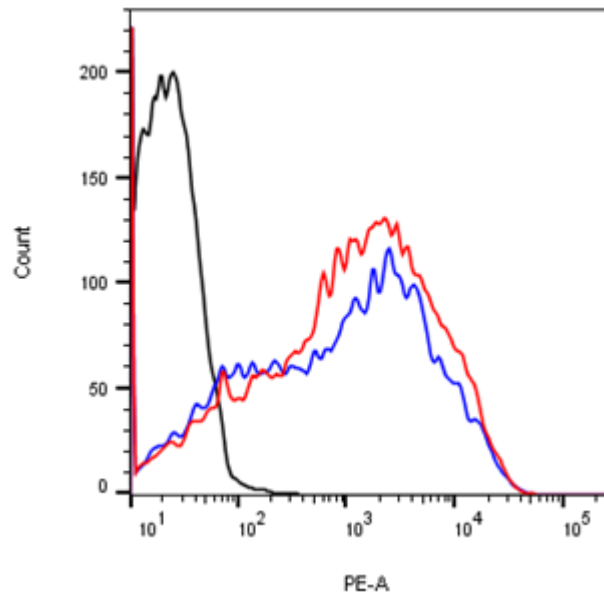
Cat. No.	Name	Clone
V04201	CD38 Antibody (SD32), mAb, Mouse	SD32
Specificity:	Human CD38	
Isotype:	IgG1	
Production:	Cultured <i>in vitro</i> under conditions free from animal-derived components	
Purification:	Protein A/G affinity column	
Formulation:	PBS, pH 7.4, containing 0.03% Proclin 300.	
Storage:	For long term storage, aliquot and store at -20°C or below. Avoid repeated freezing and thawing cycles.	
Application:	Flow Cytometry	
Antigen description:	CD38, a single-chain type II transmembrane glycoprotein, is an ADP-ribosyl cyclase and expressed on the surface of many immune cells, including early hematopoietic precursors and leukocytes. It is a marker of cell activation, contributing to the production of pro-inflammatory cytokines and cell proliferation.	
Note:	GenScript can customize this product per customer's request including product size, buffer components, etc.	

For Research or further manufacturing use only

**860 Centennial Ave., Piscataway, NJ 08854, USA**

Example:

Flow cytometric analysis of CD38 expression on human peripheral blood lymphocytes



Flow cytometric analysis of human whole blood after red blood cell lysis using CD38 Antibody (SD32), mAb, Mouse (GenScript, V04201; red curve) or with a negative control (black curve), or with a positive antibody (blue curve) followed by R-PE conjugated anti-mouse IgG.

For Research or further manufacturing use only

**860 Centennial Ave., Piscataway, NJ 08854, USA**