

GFP Antibody, pAb, Chicken

Cat. No.: A01694-100

Size: 100 µg

Synonyms: Green Fluorescent Protein antibody;

Description:

Green fluorescence protein (GFP) is a 27 kDa protein derived from jellyfish *Aequorea victoria*. It emits green light (emission peak at a wavelength of 509 nm) when excited by blue light (excitation peak at a wavelength of 395 nm). GFP has become a very useful tool as a fusion protein to report gene expression, trace cell lineage and define subcellular protein localizations. YFP differs from GFP due to a mutation at T203Y.

GenScript GFP Antibody, pAb, Chicken is developed in chicken using purified recombinant full-length GFP protein.

Immunogen: purified recombinant full-length GFP protein

Host: Chicken

Conjugation: Unconjugated

Formulation:

0.5 mg/ml, lyophilized with PBS, pH 7.4, containing 0.02% sodium azide

Ig Subclass: IgY

Specificity: **GenScript GFP Antibody, pAb, Chicken**

specifically reacts with fusion proteins containing GFP epitope tag. This antibody recognizes all variants of GFP protein such

as eGFP, AcGFP1 and cGFP, and a variety of variants of RFP protein such as DsRed, DeRed2, mCherry and tdTomato. It slightly recognizes mOrange protein.

Purification: Immunoaffinity chromatography

Applications:

Working concentrations for specific applications should be determined by the investigator. The appropriate concentrations may be affected by secondary antibody affinity, antigen concentration, the sensitivity of the method of detection, temperature, the length of the incubations, and other factors. The suitability of this antibody for applications other than those listed below has not been determined. The following concentration ranges are recommended starting points for this product.

Western blot: 0.2-1 µg/ml

Immunoprecipitation: 1-5 µg/ml

Other Applications: user optimized

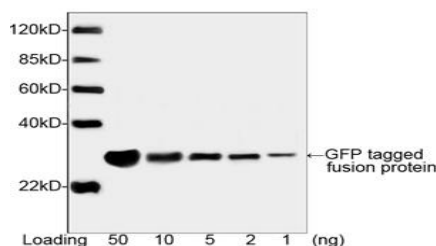
Reconstitution:

Reconstitute the lyophilized powder with deionized water (or equivalent) to an antibody concentration of 0.5 mg/ml.

Storage:

The antibody is stable in lyophilized form if stored at -20°C or below. The reconstituted antibody can be stored for 2-3 weeks at 2-8°C. For long term storage, aliquot and store at -20°C or below. Avoid repeated freezing and thawing cycles.

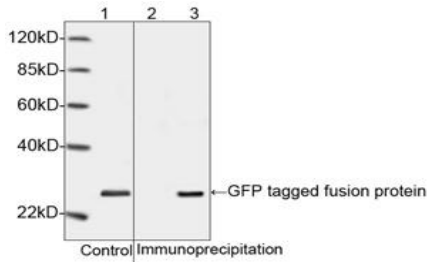
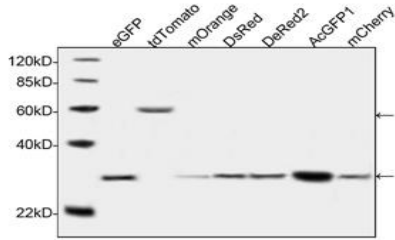
Example



Western blot analysis of GFP tagged fusion protein using GFP Antibody, pAb, Chicken (GenScript, A01694, 1 µg/ml). The signal was developed with IRDye™ 800 Conjugated Rabbit Anti-Chicken IgG.

Predicted Size: 27 kD

Observed Size: 27 kD



Specificity analysis of GFP Antibody, pAb, Chicken (GenScript, A01694) by Western blot, using a variety of variants of GFP protein

such as eGFP and AcGFP1, and variety of variants of RFP protein such as tdTomato, mOrange, DsRed, DeRed2, and mCherry.

The signal was developed with IRDye™ 800 Conjugated Rabbit Anti-Chicken IgG.

Western blot analysis of cell lysates containing GFP tagged fusion protein and its immunoprecipitates.

1: Cell lysates containing GFP tagged fusion protein as input control.

2: Immunoprecipitates of the cell lysates incubated with Chicken IgY Control (GenScript, A01010) as negative control.

3: Immunoprecipitates of the cell lysates incubated with GFP Antibody, pAb, Chicken (GenScript, A01694).