

Caspr2 Antibody, pAb, Rabbit

Cat. No.: A01426-40

Size: 40 µg

Synonyms: Contacting-associated protein 2 antibody;

Description:

Contacting-associated protein 2 (Caspr2) is a member of the neurexin superfamily that mediates nervous system cell-cell interactions. The C-terminal region of Caspr2 participates in the association with Kv1.1, Kv1.2 and their Kv-beta-2 subunit. Expression of Caspr2 is regulated directly by transcription factor FOXP2. Disruption or decreased expression of Caspr2 probably leads to a disturbed distribution of potassium channels in the nervous system. Mutations in the Caspr2 gene have been linked to many diseases such as focal epilepsy, autism spectrum disorder and cortical dysplasia-focal epilepsy syndrome (CDFES).

GenScript **Rabbit Anti-Caspr2 Polyclonal Antibody** is developed in rabbit using a KLH-coupled synthetic peptide from C-terminal of human Caspr2 (Swiss Prot: Q9UHC6).

Immunogen: KLH-coupled synthetic peptide from C-terminal of human Caspr2 (Swiss Prot: Q9UHC6)

Host: Rabbit

Antigen Synonyms: Human

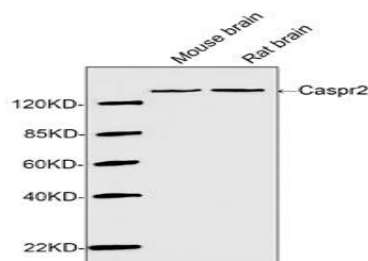
Conjugation: Unconjugated

Formulation:

0.5 mg/ml, lyophilized with PBS, pH 7.4, containing 0.02% sodium azide.

Ig Subclass: Rabbit IgG

Example



Specificity: GenScript Rabbit Anti-Caspr2 Polyclonal Antibody detects endogenous levels of mouse and rat Caspr2. It is predicted to react with human Caspr2 according to sequence homology.

Positive Control: mouse brain and rat brain.

Purification: Immunoaffinity chromatography

Applications:

Working concentrations for specific applications should be determined by the investigator. The appropriate concentrations may be affected by secondary antibody affinity, antigen concentration, the sensitivity of the method of detection, temperature, the length of the incubations, and other factors. The suitability of this antibody for applications other than those listed below has not been determined. The following concentration ranges are recommended starting points for this product.

Western blot: 0.5-1 µg/ml

Immunohistochemistry: 5-10 µg/ml **Other Applications:** user-optimized

Species Reactivity: Mouse and rat. This product has not been tested for other species yet.

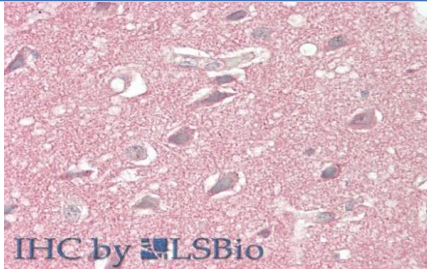
Reconstitution:

Reconstitute the lyophilized powder with deionized water (or equivalent) to an antibody concentration of 0.5 mg/ml.

Storage:

The antibody is stable in lyophilized form if stored at -20°C or below. The reconstituted antibody can be stored for 2-3 weeks at 2-8°C. For long term storage, aliquot and store at -20°C or below. Avoid repeated freezing and thawing cycles.

Western blot analysis of tissue lysates using 1 µg/ml Rabbit Anti-Caspr2 Polyclonal Antibody (GenScript, A01426)
The signal was developed with IRDye™ 800 Conjugated Goat Anti-Rabbit IgG.
Predicted Size: 148 KD
Observed Size: 148 KD



Immunohistochemistry analysis of human brain, cortex tissue slide (Paraffin embedded) using Caspr2 Antibody, pAb, Rabbit (GenScript, Cat.No. A01426, 10 µg/ml)