

DATASHEET

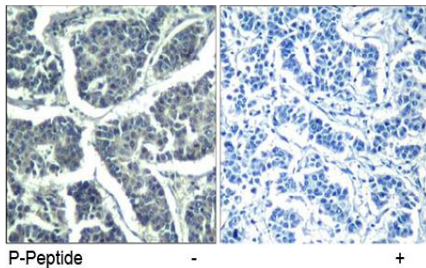
Version: 2016-08-17

PLC- γ 2 Antibody (Phospho-Tyr¹²¹⁷), pAb, Rabbit**Cat. No.:** A01219-100**Size:** 100 μ g**Synonyms:** PLC-gamma2(phospho-Tyr1217) Antibody ;**Description:**

none

Immunogen: Synthesized phosphopeptide derived from human PLC- γ 2 around the phosphorylation site of tyrosine 1217 (F-L-Y^P-D-T)**Host:** Rabbit**Antigen Synonyms:** Human**Conjugation:** Unconjugated**Formulation:**1 mg/ml in phosphate buffered saline (without Mg²⁺ and Ca²⁺), pH 7.4, 150mM NaCl, 0.02% sodium azide, and 50% glycerol**Ig Subclass:** Rabbit IgG**Specificity:** Genscript Rabbit Anti-PLC- γ 2 (Phospho-Tyr¹²¹⁷) Polyclonal Antibody detects endogenous levels of PLC- γ 2 only when phosphorylated at tyrosine 1217.**Purification:** The antibody is affinity-purified from rabbit antiserum by affinity chromatography using epitope-specific phosphopeptide. The antibody against non-phosphopeptide is removed by chromatography using non-phosphopeptide corresponding to the phosphorylation site.**Applications:****IHC:** 1:50-1:100**Species Reactivity:** Human, mouse, rat**Storage:**

Store at -20°C/1 year.

Example

Immunohistochemical analysis of paraffin-embedded human breast carcinoma tissue using Rabbit Anti-PLC- γ 2 (Phospho-Tyr¹²¹⁷) Polyclonal Antibody (GenScript, A01219)