

## ApoM Antibody, pAb, Rabbit

**Cat. No.:** A00954-40

**Size:** 40 µg

**Synonyms:** Rabbit Anti-ApoM pAb;

### Description:

ApoM is a novel apolipoprotein belonging to the lipocalin protein superfamily. Like other apolipoproteins, it is expressed in hepatocytes and secreted into plasma where it associates with high-density lipoprotein particles. In addition, ApoM is expressed at high levels in the kidney tubule cells.

GenScript **Rabbit Anti-ApoM Polyclonal Antibody** is developed in rabbit using a KLH-coupled synthetic peptide. It is purified from rabbit antiserum by immunoaffinity chromatography.

**Immunogen:** Synthetic peptide conjugated to KLH

**Host:** Rabbit

**Antigen Synonyms:** Mouse

**Conjugation:** Unconjugated

### Predicated Band Size:

21 kD

### Observed Band Size:

21 kD

### Formulation:

0.5 mg/ml in PBS, pH 7.4, containing 30% glycerol and 0.02% sodium azide

**Ig Subclass:** Rabbit IgG

**Specificity:** GenScript Rabbit Anti-ApoM Polyclonal Antibody reacts with mouse ApoM.

**Purification:** Immunoaffinity chromatography

### Applications:

Working concentrations for specific applications should be determined by the investigator. The appropriate concentrations may be affected by secondary antibody affinity, antigen concentration, the sensitivity of the method of detection, temperature, the length of the incubations, and other factors. The suitability of this antibody for applications other than those listed below has not been determined. The following concentration ranges are recommended starting points for this product.

**ELISA:** 0.05-0.5 µg/ml

**Western blot:** 1.0 µg/ml

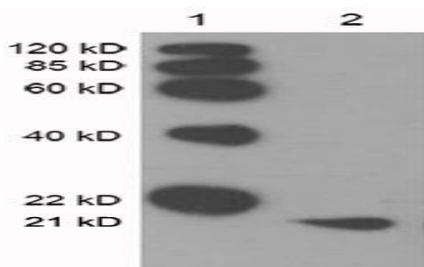
**Western Blot Using ONE-HOUR Western™ Kit:** For quick results, we recommend the GenScript ONE-HOUR Western™ Kit (L00204C). Mix 10 µg of this antibody with 10 ml of WB solution for an 8 cm x 8 cm membrane.

**Other applications:** user-optimized

### Storage:

The antibody is stable for 2-3 weeks if stored at 2-8°C. For long term storage, aliquot and store at -20°C or below. Avoid repeated freezing and thawing cycles.

### Example



Western blot analysis:

Lane 1: EasyWestern Protein Standard (GenScript, MM0908)

Lane 2: Mouse plasma lysate

Primary antibody: 1 µg/ml Rabbit Anti-ApoM Polyclonal Antibody (GenScript, A00954)

Secondary antibody: Goat Anti-Rabbit IgG (H&L) [HRP] Polyclonal Antibody (GenScript, A00098, 1:5,000)