

Chk1 Antibody (Ab-317), pAb, Rabbit**Cat. No.:** A00608-100**Size:** 100 µg**Synonyms:** Rabbit Anti-Chk1 (Ab-317) pAb;**Description:**

none

Immunogen: Synthesized non-phosphopeptide derived from human Chk1 around the phosphorylation site of serine 317 (S-S^P-Q-P)**Host:** Rabbit**Antigen Synonyms:** Human**Conjugation:** Unconjugated**Predicated Band Size:**

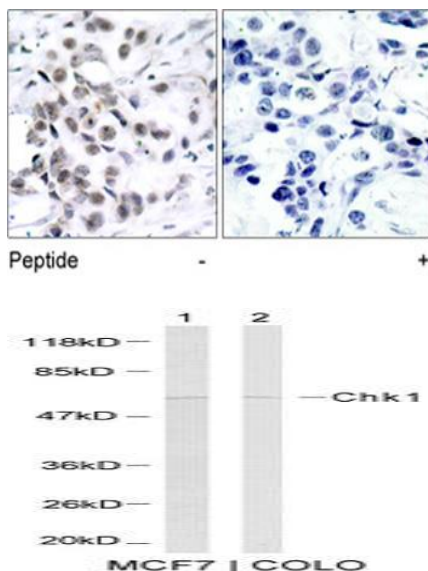
56 kD

Observed Band Size:

56 kD

Formulation:1 mg/ml in phosphate buffered saline (without Mg²⁺ and Ca²⁺), pH 7.4, 150 mM NaCl, 0.02% sodium azide and 50% glycerol**Ig Subclass:** Rabbit IgG**Specificity:** Rabbit Anti-Chk1 (Ab-317) detects endogenous levels of total Chk1 protein.**Purification:** The antibody is affinity-purified from rabbit antiserum by affinity chromatography using epitope-specific immunogen.**Applications:****WB:** 1:500-1:1,000**IHC:** 1:50-1:100**Species Reactivity:** Human, mouse**Storage:**

Store at -20°C/1 year.

Example

Immunohistochemical analysis of paraffin-embedded human breast carcinoma tissue using Rabbit Anti-Chk1 (Ab-317) Polyclonal Antibody (GenScript, A00608)

Western blot analysis of the extracts using Rabbit Anti-Chk1 (Ab-317) Polyclonal Antibody (GenScript, A00608)