

## DATASHEET

Version: 2016-08-17

## Tau Antibody (Ab-404), pAb, Rabbit

**Cat. No.:** A00401-100**Size:** 100 µg**Synonyms:** Rabbit Anti Tau; Anti Tau**Description:**

none

**Immunogen:** Synthesized non-phosphopeptide derived from human tau around the phosphorylation site of serine 404 (D-T-S<sup>P</sup>-P-R)**Host:** Rabbit**Antigen Synonyms:** Human**Conjugation:** Unconjugated**Predicated Band Size:**

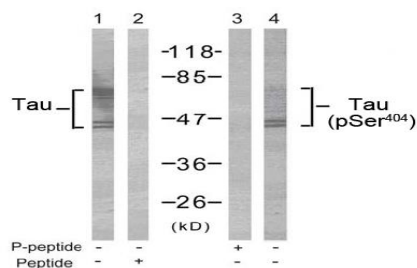
62 kD

**Observed Band Size:**

62 kD

**Formulation:**1 mg/ml in phosphate buffered saline (without Mg<sup>2+</sup> and Ca<sup>2+</sup>), pH 7.4, 150mM NaCl, 0.02% sodium azide, and 50% glycerol.**Ig Subclass:** Rabbit IgG**Specificity:** GenScript Rabbit Anti-Tau (Ab-404) Polyclonal Antibody detects endogenous levels of total Tau protein.**Purification:** The antibody is affinity-purified from rabbit antiserum by affinity chromatography using epitope-specific immunogen.**Applications:****WB:** 1:500-1:1,000**Species Reactivity:** Human, mouse, rat**Storage:**

Store at -20°C/1 year.

**Example**

Western blot analysis of extract from mouse brain tissue using Rabbit Anti-Tau (Ab-404) Polyclonal Antibody (GenScript, A00401, lane 1 and 2) and Rabbit Anti-Tau (Phospho-Ser<sup>404</sup>) Polyclonal Antibody (GenScript, A00408, lane 3 and 4)