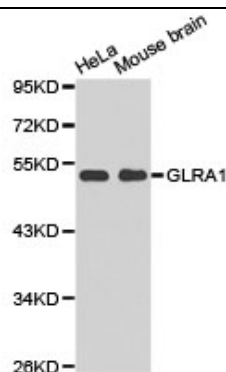




GLRA1 Polyclonal Antibody

E92958

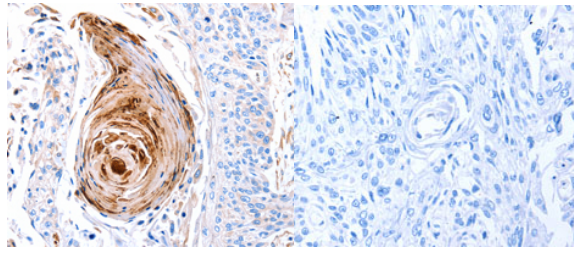
- Catalog Number:** E92958
Amount: 100ul
Background: Glycine receptor subunit alpha-1 is a protein that in humans is encoded by the GLRA1 gene. The protein encoded by this gene is a subunit of a pentameric inhibitory glycine receptor. The receptor mediates postsynaptic inhibition in the central nervous system. Defects in this gene are a cause of startle disease (STHE), also known as hereditary hyperekplexia or congenital stiff-person syndrome. Two transcript variants encoding different isoforms have been found for this gene.
Species: Rabbit
Isotype: IgG
Storage/Stability: Store at -20oC or -80oC. Avoid freeze / thaw cycles. Buffer: PBS with 0.02% sodium azide, 50% glycerol, pH7.3.
Synonyms: STHE; HKPX1
Immunogen: A synthetic peptide of human GLRA1
Purification: Affinity purification
Reactivity: H M R
Applications: WB IHC
Molecular Weight: 53kDa
Swiss-Prot No. : P23415
Gene ID: 2741



WB 1:500 - 1:2000 IHC 1:50- 1:100 Western blot
analysis of extracts of various celllines, using
GLRA1 antibody. (1: HeLa cell lysate 2: Mouse brain)

For Research Use Only

tissue lysate)



Immunohistochemistry of
paraffin-embedded human esophagus cancer tissue
using GLRA1 antibody.