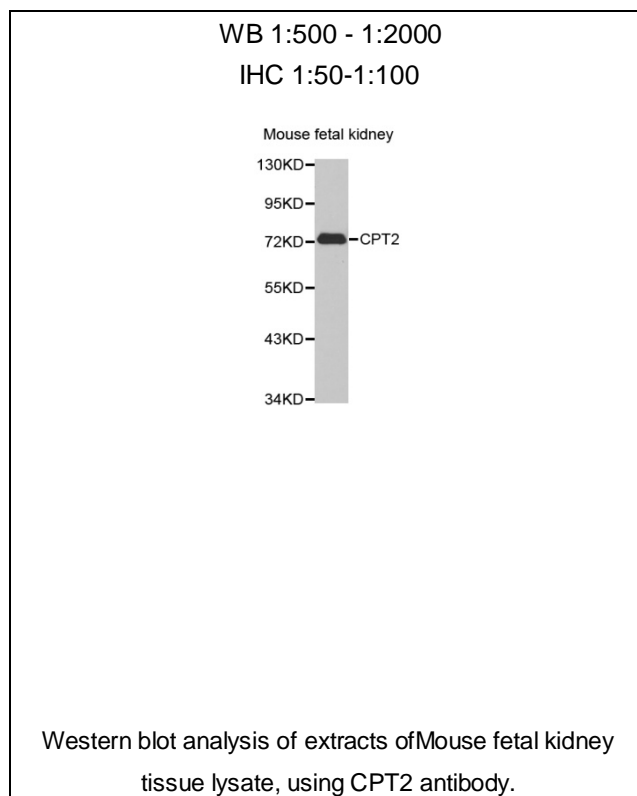




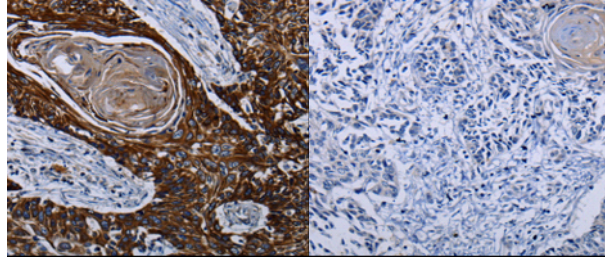
## CPT2 Polyclonal Antibody

E92876

- Catalog Number:** E92876  
**Amount:** 100ul  
**Background:** The protein encoded by this gene is a nuclear protein which is transported to the mitochondrial inner membrane. Together with carnitine palmitoyltransferase I, the encoded protein oxidizes long-chain fatty acids in the mitochondria. Defects in this gene are associated with mitochondrial long-chain fatty-acid (LCFA) oxidation disorders.  
**Species:** Rabbit  
**Isotype:** IgG  
**Storage/Stability:** Store at -20oC or -80oC. Avoid freeze / thaw cycles. Buffer: PBS with 0.02% sodium azide, 50% glycerol, pH7.3.  
**Synonyms:** CPT1;IIAE4;CPTASE;  
**Immunogen:** A synthetic peptide of human CPT2  
**Purification:** Affinity purification  
**Reactivity:** H M R  
**Applications:** WBIHC  
**Molecular Weight:** 74kDa  
**Swiss-Prot No. :** P23786  
**Gene ID:** 1376



**For Research Use Only**



Immunohistochemistry of paraffin-embedded human esophagus cancer tissue using CPT2 antibody.