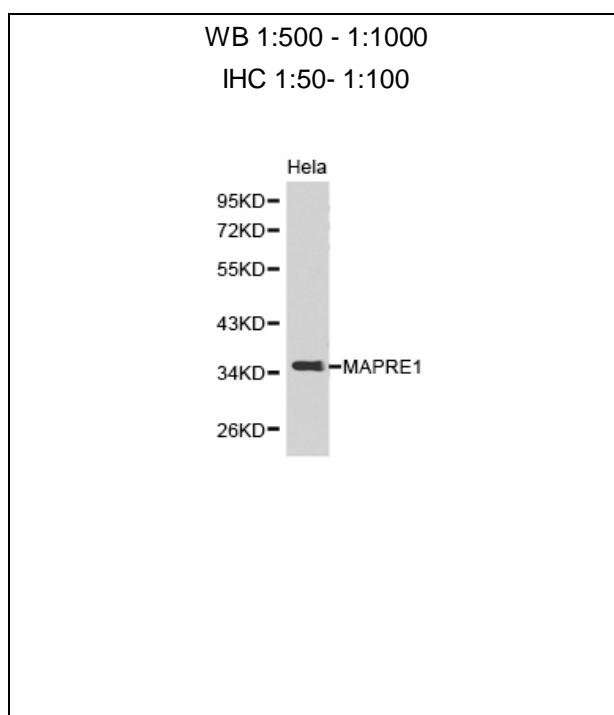




MAPRE1 Polyclonal Antibody

E92614

- Catalog Number:** E92614
Amount: 100ul
Background: EB1 (end-binding protein 1) is a microtubule associated protein (1). EB1 localizes to the growing ends of microtubules, the centrosome and the mitotic spindle (2-4). EB1 is also found to associate with the adenomatous polyposis coli (APC) protein (5). Recent studies also suggest that EB1 plays a role in microtubule-based transport (6).
Species: Rabbit
Isotype: IgG
Storage/Stability: Store at -20oC or -80oC. Avoid freeze / thaw cycles. Buffer: PBS with 0.02% sodium azide, 50% glycerol, pH7.3.
Synonyms: MAPRE1; EB1; MGC117374; MGC129946;
Immunogen: Fusion protein of human MAPRE1
Purification: Affinity purification
Reactivity: H M R
Applications: WB IHC
Molecular Weight: 30kDa
Swiss-Prot No. : Q15691
Gene ID: 22919
References: 1. Tirnauer, J.S. and Bierer, B.E. (2000) J. Cell Biol. 149, 761-766. 2. Vaughan, K.T. (2005) J. Cell Biol. 171, 197-200. 3. Berrueta, L. et al. (1998) Proc. Natl. Acad. Sci. USA 95, 10596-10601. 4. Morrison, E.E. et al. (1998) Oncogene 17, 3471-3477. 5. Su, L.K. et al. (1995) Cancer Res. 55, 2972-2977. 6. Vaughan, K.T. (2005) J. Cell Biol. 171, 197-200.



For Research Use Only

Western blot analysis of extracts of HeLacell line, using
MAPRE1antibody.