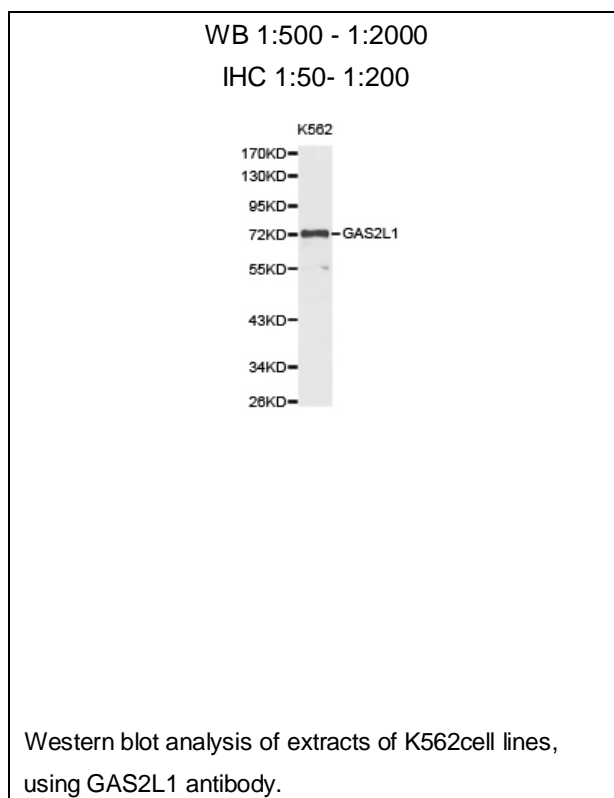




## GAS2L1 Polyclonal Antibody

E92143

- Catalog Number:** E92143  
**Amount:** 100ul  
**Background:** The protein encoded by this gene, a member of the GAS2 family, is similar in sequence to the mouse protein Gas2, an actin-associated protein expressed at high levels in growth-arrested cells. Expression of the mouse Gas2 gene is negatively regulated by serum and growth factors. Three transcript variants encoding two different isoforms have been found for this gene. [provided by RefSeq, Jul 2008]  
**Species:** Rabbit  
**Isotype:** IgG  
**Storage/Stability:** Store at -20oC or -80oC. Avoid freeze / thaw cycles. Buffer: PBS with 0.02% sodium azide, 50% glycerol, pH7.3.  
**Synonyms:** GAR22  
**Immunogen:** Recombinant protein of human GAS2L1  
**Purification:** Affinity purification  
**Reactivity:** H M R  
**Applications:** WB IHC  
**Molecular Weight:** 73kDa  
**Swiss-Prot No. :** Q99501  
**Gene ID:** 10634



**For Research Use Only**