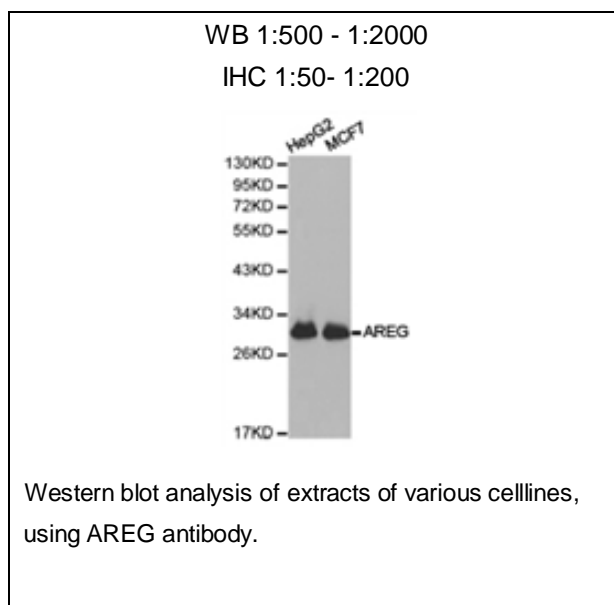




AREG Polyclonal Antibody

E91860

- Catalog Number:** E91860
Amount: 100ul
Background: Amphiregulin (AREG) is one of the ligands of the epidermal growth factor receptor (EGFR). AREG plays a central role in mammary gland development and branching morphogenesis in organs and is expressed both in physiological and in cancerous tissues. The AREG protein is synthesized as a 252-amino acid transmembrane precursor, pro-AREG. At the plasma membrane, pro-AREG is subjected to sequential proteolytic cleavages within its ectodomain and is then released as the soluble AREG protein. Depending on the cell type and microenvironment, AREG can be produced in multiple cellular and mature forms using alternative pro-AREG cleavage sites and glycosylation motifs.
- Species:** Rabbit
Isotype: IgG
Storage/Stability: Store at -20oC or -80oC. Avoid freeze / thaw cycles. Buffer: PBS with 0.02% sodium azide, 50% glycerol, pH7.3.
Synonyms: AR; CRDGF; MGC13647; SDGF;
Immunogen: Recombinant protein of human AREG
Purification: Affinity purification
Reactivity: H M R
Applications: WB IHC
Molecular Weight: 28kDa
Swiss-Prot No. : P15514
Gene ID: 374



For Research Use Only