



ERK1 Polyclonal Antibody

E90056A

Background: Mitogen-activated protein kinases (MAPKs) are a widely conserved family of serine/threonine protein kinases involved in many cellular programs such as cell proliferation, differentiation, motility, and death. The p44/42 MAPK (Erk1/2) signaling pathway can be activated in response to a diverse range of extracellular stimuli including mitogens, growth factors, and cytokines (1-3) and is an important target in the diagnosis and treatment of cancer.

Catalog Number: E90056A

Amount: 100µg/100µl

Gene ID: 5594

Species: Rabbit

Immunogen: A 20 amino acid peptide of human ERK1.

Purification: Antigen affinity purification

Storage: Store at 4°C or -20°C (with 50% glycerol); Minimize freeze-thaw cycles; Non-hazardous.

Formulation: Each vial at least contains 0.1 mg IgG in 0.1 ml (1 mg/ml) of PBS pH7.4 with 0.1% sodium azide.

Limitation: For research use only and are not intended for diagnostic or therapeutic use.

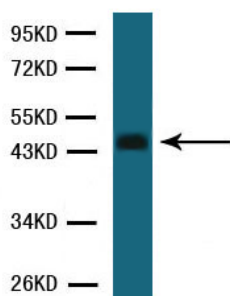
Isotope: Rabbit IgG

Species Reactivities: Human, Mouse, Rat.

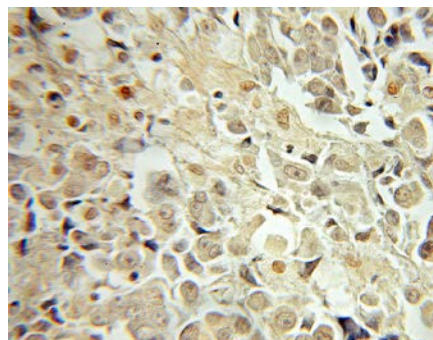
Tested Applications: WB, IHC, ELISA. Other applications have not been tested.

Application notes: WB: 1:1000, IHC: 1:100-200.

Western blot- ERK1 antibody



ERK1 antibody at 1/1000 dilution
Brain cell lysate
Predicted band size: 44KD
Observed band size: 44KD



Immunohistochemistry of paraffin-embedded
Prostate cancer using ERK1 Antibody.

For Research Use Only