



## Caveolin-1 Antibody

E8M0407-29

**Catalog Number:** E8M0407-29

**Amount:** 100ul,0.43mg/ml

**Description:** Chromogranin A is a member of the chromogranin/secretogranin family of neuroendocrine secretory proteins. It is located in secretory vesicles of neurons and endocrine cells. Chromogranin A is the precursor to several functional peptides including vasostatin, pancreastatin, catestatin and parastatin. These peptides negatively modulate the neuroendocrine function of the releasing cell (autocrine) or nearby cells (paracrine). Chromogranin A might promote the generation of secretory granules. It is used as an indicator for pancreas and prostate cancer. It might play a role in early neoplastic progression. It is also elevated in diabetes.

**Clone No:** D11-4

**Positive control:** PC12

**Cellular Localization:** Secretory protein

**Swiss-Prot No. :** P10645

**Project ID:** PB023

**Molecular Wt:** ~86kDa

**Form of Antibody:** Mouse monoclonal IgG2a in 1\*TBS (pH7.4), 0.5%BSA, 25%Glycerol. Preservative: 0.05% Sodium Azide.

**Storage/Stability:** Store at +4°C after thawing. Aliquot store at -20°C or -80°C. Avoid repeated freeze / thaw cycles.

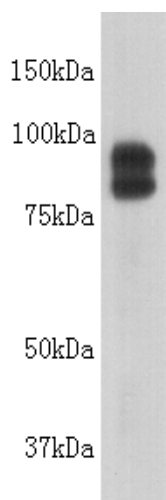
**Specificity/Sensitivity:** This antibody is produced by immunizing mouse with a synthetic peptide (KLH-coupled) corresponding to near C-terminal residues of Chromogranin A.

**Reactivity:** Human, Mouse, Rat

**Applications:** WB: 1:2,000

**References:**

1. HENDY GN, et al. Clin Invest Med ,1995,18(1):47-65.
2. Blois A, et al. Regul Pept,2006,135(1-2):78-84.
3. Leibovitch I,et al. Harefuah,2006,145(1):25-9.



**Fig:** Western blot analysis on PC12 cell lysates using anti-Chromogranin A monoclonal antibody

**For Research Use Only**