



## aquaporin PIP Antibody

-A-SE-1

E580089

**CATALOG #**

E580089-A-SE-1

**SOURCE**

Rabbit polyclonal antibody raised against synthetic peptide aquaporin PIP as immunogen.

**ANTIGEN**

Synthetic peptide of aquaporin PIP protein

**Model\_MSU\_locus**

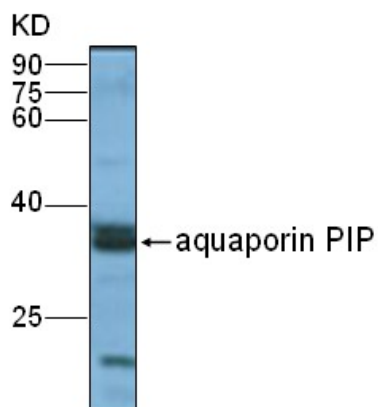
LOC\_Os02g44630.1

**APPLICATIONS**

Anti-aquaporin PIP can be used in western blot detection against rice tissues.

**PRODUCT**

Each vial contains 100µl serum.

**STORAGE**The antibody may be stored at -20°C for one year in its original formulation. Additionally, antibody may be stored at 2°C to 8°C for up to 1 month without detectable loss of activity. **Avoid repeated freeze-thaw cycles of the diluted antibody.****DATA**

WB (1:5000) analysis of protein aquaporin PIP expression in rice (CV. 9311) seeds at the filling stage with Anti-aquaporin PIP (E580089-A-SE).

**For Research Use Only**