



LN28A Antibody

-A-SE

E561030

CATALOG #

E561030-A-SE

SOURCE

Rabbit polyclonal antibody raised against synthetic peptide LN28A as immunogen.

ANTIGEN

Synthetic peptide of LN28A protein

SWISS-PORT KEY

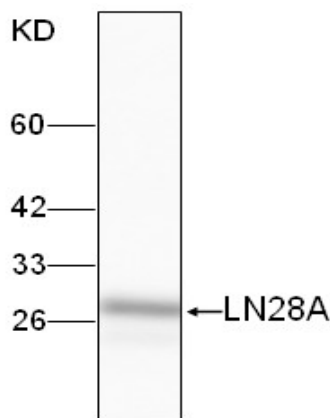
LN28A (Q9H9Z2)

APPLICATIONS

Anti-LN28A can be used in western blot detection against rice tissues.

PRODUCT

Each vial contains 100µl serum.

STORAGEThe antibody may be stored at -20°C for one year in its original formulation. Additionally, antibody may be stored at 2°C to 8°C for up to 1 month without detectable loss of activity. **Avoid repeated freeze-thaw cycles of the diluted antibody.****DATA**

WB (1:5000) analysis of protein LN28A expression in E.coli with Anti-LN28A ([E561030-A-SE](#)).

For Research Use Only