



G1/S-specific cyclin-D1 Antibody

E551095
-19-PU

CATALOG

E551095-19-PU

SOURCE

Purified mouse monoclonal antibody generated using *E.coli* expressed recombinant protein G1/S-specific cyclin-D1 as immunogen.

ANTIGEN

Recombinant protein corresponding to full length G1/S-specific cyclin-D1.

NCBI KEY

G1/S-specific cyclin-D1 [GeneID: 595; Nucleotide: NM_053056.2; Protein: NP_444284.1]

CLASS

Mouse IgG_{2b}

SPECIFICITY

Anti-G1/S-specific cyclin-D1 recognizes recombinant protein G1/S-specific cyclin-D1.

APPLICATIONS

Anti-G1/S-specific cyclin-D1 can be used in **ELISA** and **WB-Re**.

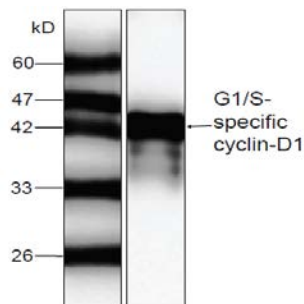
PRODUCT

Each vial contains 100 µg IgG in 100 µl of citrate-tris-HCl buffer pH7.0 with 0.02% Proclin 300.

STORAGE

The antibody may be stored at -20°C for one year in its original formulation. Additionally, antibody may be stored at 2°C to 8°C for up to 1 month without detectable loss of activity. **Avoid repeated freeze-thaw cycles of the diluted antibody.**

DATA



WB (1:1000) analysis of recombinant protein G1/S-specific cyclin-D1 with Anti-G1/S-specific cyclin-D1 (E551095-19-PU).

For Research Use Only