



## CXCL12 Antibody

E306159b

### Product description:

Formulation: rabbit anti- CXCL12 antibody purified by protein A column containing 0.02% NaN<sub>3</sub>  
Catalog No.: E306159b  
Size: 200ul

### Source:

Rabbit polyclonal CXCL12<sup>(1)</sup> antibody was raised against a peptide from the C terminal residues of human CXCL12.

### Species Reactivity:

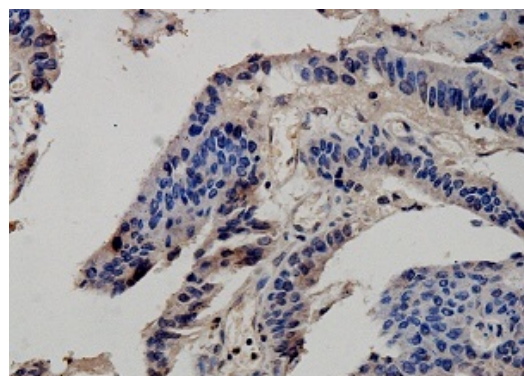
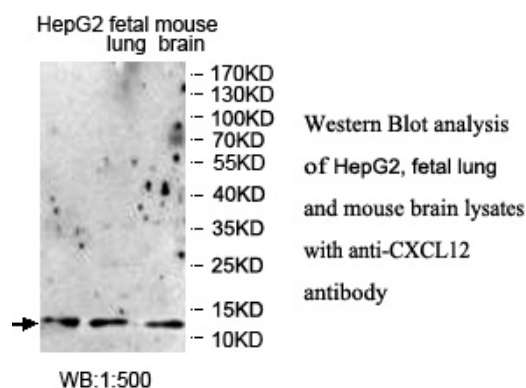
Reacts with: Human  
Predicted: mus, rat  
Not yet tested in other species.

### Application:

For research use only  
ELISA titer: 1:20,000-1:80,000  
Western blot analysis: 1:500-1:1,000  
Immunohistochemistry: 1:100-1:500  
Optimal dilutions/concentrations should be determined by the end use

### Dilution instruction and storage:

Already reconstituted in 200ul sterile H<sub>2</sub>O. The antibody is stable for at least one year when stored at -20°C after reconstitution.  
Avoid repeated freeze/defrost cycles



**Immunohistochemical staining of formalin-fixed paraffin-embedded colon cancer staining with anti-CXCL12 antibody at a dilution of 1/100**

### Reference:

(1) Miwa,Y., Hayashi,T., Suzuki,S., et al. Up-regulated expression of CXCL12 in human spleens with extramedullary haematopoiesis. Pathology 45 (4), 408-416 (2013)

**For Research Use Only**