



PCIF1 Antibody

E305361

Product description:

Formulation: Lyophilized PCIF1 antibody purified by protein affinity column containing 1% BSA and 0.02% NaN₃
Catalog No.: E305361
Size: 100ug/200ul

Source:

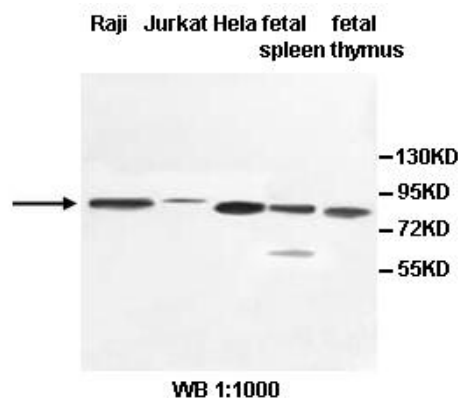
Rabbit polyclonal PCIF1⁽¹⁾ antibody was raised against a recombinant human PCIF1 protein 64-338aa (BC010005).

Species Reactivity:

Reacts with: Human
Predicted: mus, rat
Not yet tested in other species.

Application:

For research use only
ELISA titer: 1:20,000-1:80,000
Western blot analysis: 1:1,000-1:2,000
Optimal dilutions/concentrations should be determined by the end use



Dilution instruction and storage:

Already reconstituted in 200ul sterile H₂O. The antibody is stable for at least one year when stored at -20°C after reconstitution.

Avoid repeated freeze/defrost cycles.

Reference:

(1) Yunokuchi,I., Fan,H., Iwamoto,Y., et al. Prolyl isomerase Pin1 shares functional similarity with phosphorylated CTD interacting factor PCIF1 in vertebrate cells. Genes Cells 14 (9), 1105-1118 (2009)

For Research Use Only