



AKR1E2 Antibody

E301634

Product description:

Formulation: Lyophilized anti-AKR1E2 antibody purified by peptide affinity column containing 1% BSA and 0.02% NaN_3

Catalog No.: E301634

Size: 100ug/200ul

Source:

Rabbit polyclonal AKR1E2 ⁽¹⁾ antibody was raised against a peptide from intermediate residues of human AKR1E2 protein.

Species Reactivity:

Human

Not yet tested in other species.

Application:

For research use only

Peptide ELISA titer: 1:10,000-1:40,000

Western blot analysis: 1:1,000-1:2,000

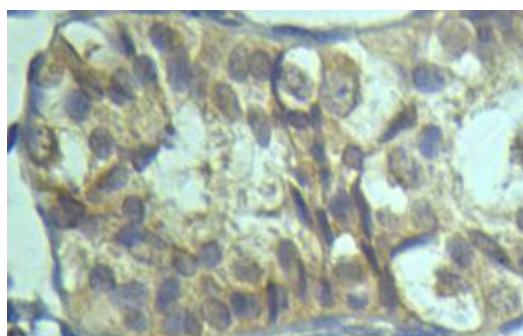
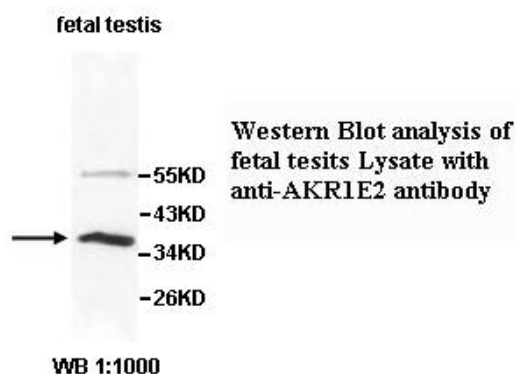
Immunohistochemistry: 1:100-1:500

Optimal dilutions/concentrations should be determined by the end user.

Dilution instruction and storage:

Already reconstituted in 200ul sterile H_2O . The antibody is stable for at least one year when stored at -20°C after reconstitution.

Avoid repeated freeze/defrost cycles.



Immunohistochemical staining of formalin-fixed paraffin-embedded fetal testis showing cytoplasmic staining with anti-AKR1E2 antibody at a dilution of 1/100.

Reference:

- (1) Clancy, R.M., Marion, M.C., Kaufman, K.M., et al. Identification of candidate loci at 6p21 and 21q22 in a genome-wide association study of cardiac manifestations of neonatal lupus. *Arthritis Rheum.* 62 (11), 3415-3424 (2010)

For Research Use Only