



AMPD1 Antibody

E301429

Product description:

Formulation: Lyophilized anti-AMPD1 antibody purified by peptide affinity column containing 2% BSA and 0.02% NaN₃

Catalog No.:E301429

Size: 100ug/200ul

Source:

Rabbit polyclonal AMPD1 ⁽¹⁾ antibody was raised against a peptide from intermediate residues of human AMPD1 protein.

Species Reactivity:

Human, mus, rat

Not yet tested in other species.

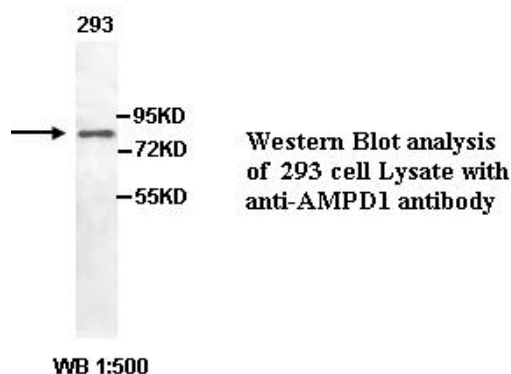
Application:

For research use only

Peptide ELISA titer: 1:10,000-1:40,000

Western blot analysis: 1:200-1,000

Optimal dilutions/concentrations should be determined by the end user.



Dilution instruction and storage:

Already reconstituted in 200ul sterile H₂O. The antibody is stable for at least one year when stored at -20°C after reconstitution.

Avoid repeated freeze/thaw cycles.

Reference:

(1) Szydłowska, M. and Roszkowska, A. Expression patterns of AMP-deaminase isozymes in human hepatocellular carcinoma (HCC). Mol. Cell. Biochem. 318 (1-2), 1-5 (2008)

For Research Use Only