



## Wee1 Antibody

E300811

### Product description:

Formulation: Lyophilized anti-Wee1 antibody purified by peptide affinity column containing 0.5% BSA and 0.02%  $\text{NaN}_3$

Catalog No.: E300811

Size: 100ug/200ul

### Source:

Rabbit polyclonal Wee1<sup>(1)</sup> antibody was raised against a 16 amino acid peptide from the intermediate residues of human Wee1 protein.

### Species Reactivity:

Human, rat

Not yet tested in other species.

### Application:

For research use only

Peptide ELISA titer: 1:80,000

Western blot analysis: 1:200-1,000

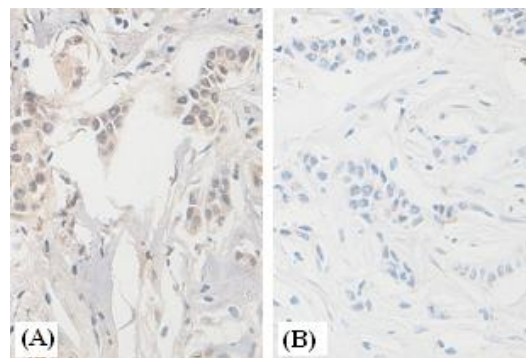
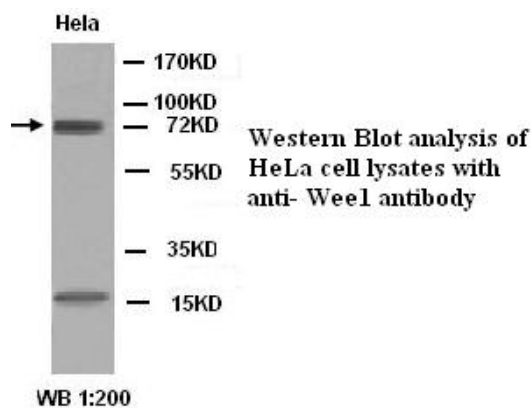
Immunohistochemistry: 1:50-200

Optimal dilutions/concentrations should be determined by the end user.

### Dilution instruction and storage:

Already reconstituted in 200ul sterile  $\text{H}_2\text{O}$ . The antibody is stable for at least one year when stored at  $-20^\circ\text{C}$  after reconstitution.

Avoid repeated freeze/defrost cycles.



Immunohistochemical staining of formalin-fixed paraffin-embedded breast carcinoma showing nuclear staining with anti-wee1 antibody at a dilution of 1/100(A). Block with immunizing peptide(B).

### Reference:

(1) Igarashi, M., Nagata, A., Jinno, S., Suto, K. and Okayama, H. Wee1(+)-like gene in human cells. *Nature* 1991;353 (6339): 80-83.

**For Research Use Only**