



Alpha 2 Catenin Antibody

E300462

Product description:

Formulation: Lyophilized anti-alpha 2 Catenin antibody purified by protein A column containing 0.02% NaN₃

Catalog No.: E300462

Size: 100ug/200ul

Source:

Rabbit polyclonal alpha 2 Catenin ⁽¹⁾ antibody was raised against a peptide from intermediate residues of human alpha 2 Catenin protein.

Species Reactivity:

Reacts with: Human

Predicted: mus, rat

Not yet tested in other species.

Application:

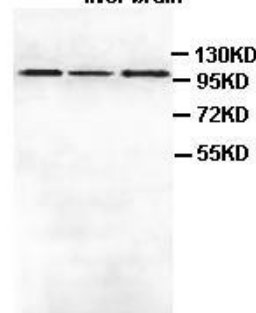
For research use only

Peptide ELISA titer: 1:10,000-1:40,000

Western blot analysis: 1:200-1:1,000

Optimal dilutions/concentrations should be determined by the end user.

HepG2 Fetal Fetal
liver brain



Western Blot analysis of HepG2 cell, fetal liver and brain Lysate with anti-alpha 2 Catenin antibody

WB 1:500

Dilution instruction and storage:

Already reconstituted in 200ul sterile H₂O. The antibody is stable for at least one year when stored at -20°C after reconstitution.

Avoid repeated freeze/thaw cycles.

Reference:

(1) Claverie, J.M., Hardelin, J.P., Legouis, R., et al. Characterization and chromosomal assignment of a human cDNA encoding a protein related to the murine 102-kDa cadherin-associated protein (alpha-catenin). *Genomics* 15 (1), 13-20 (1993)

For Research Use Only