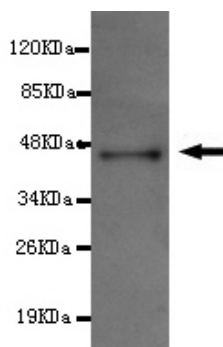




CPA1 Antibody

E220187

Catalog Number	E220187-1, E220187-2
Amount	50µg/50µl, 100µg/100µl
Description	Mouse monoclonal IgG to CPA1
GeneBank ID	NM_001868.1
Swiss-prot ID	P15085
Immunogen	Recombinant fragment of human CPA1(N-terminus).
Reacts with	Human
Application notes	Recommended dilutions. ELISA: 1/5000 - 1/20000. WB: 1/100-1/2000.
Cellular localization	Secreted
Relevance	Three different forms of human pancreatic procarboxypeptidase A have been isolated. This gene encodes a monomeric pancreatic exopeptidase involved in zymogen inhibition.
Purity	Protein G-Sepharose affinity purified.
Storage buffer	Preservative: 0.02% Sodium Azide and 50% glycerol, 1% BSA, PBS, pH7.4.
Form	Liquid
Storage instructions	Aliquot and store at -20°C. Avoid repeated freeze / thaw cycles.



CPA1-n antibody (E220187) at 1/1000 dilution + recombinant immunogen with a DsbA tag. Predicted band size:45KDa. Observed band size:45KDa.

For Research Use Only