

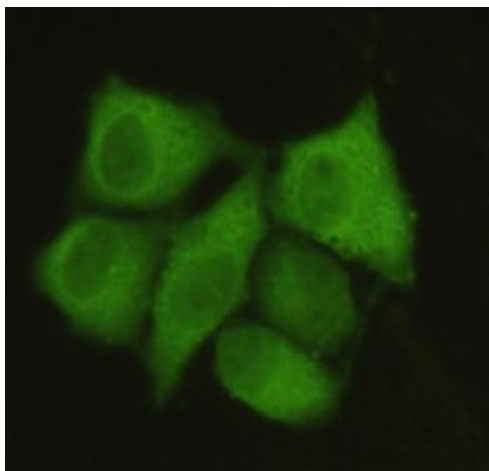


protein phosphatase 1A Antibody

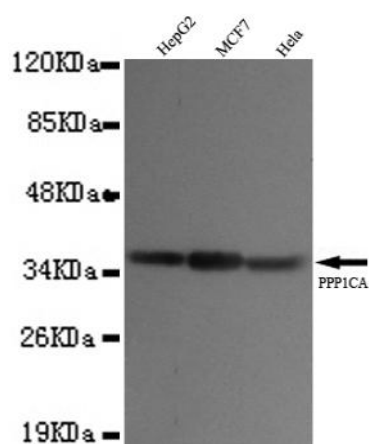
E2200453

- Catalog Number:** E2200453
- Size:** 100ug
- Host:** Mouse
- Formulation:** Purified mouse monoclonal in buffer containing 0.1M Tris-Glycine (pH 7.4, 150 mM NaCl) with 0.2% sodium azide, 50% glycerol
- Sensitivity:** This antibody detects endogenous levels PP1A (N-terminus) and does not cross-react with related proteins.
- Entrez summary:** The protein encoded by this gene is one of the three catalytic subunits of protein phosphatase 1 (PP1). PP1 is a serine/threonine specific protein phosphatase known to be involved in the regulation of a variety of cellular processes, such as cell division, glycogen metabolism, muscle contractility, protein synthesis, and HIV-1 viral transcription. Increased PP1 activity has been observed in the end stage of heart failure. Studies in both human and mice suggest that PP1 is an important regulator of cardiac function. Mouse studies also suggest that PP1 functions as a suppressor of learning and memory. Three alternatively spliced transcript variants encoding different isoforms have been found for this gene.
- UniPort summary**
- Function:** Protein phosphatase 1 (PP1) is essential for cell division, and participates in the regulation of glycogen metabolism, muscle contractility and protein synthesis. Involved in regulation of ionic conductances and long-term synaptic plasticity. May play an important role in dephosphorylating substrates such as the postsynaptic density-associated Ca(2+)/calmodulin dependent protein kinase II. Component of the PTW/PP1 phosphatase complex, which plays a role in the control of chromatin structure and cell cycle progression during the transition from mitosis into interphase.
- Immunogen:** Purified recombinant human PP1A (N-terminus) protein fragments expressed in E.coli.
- Antibody Type:** Monoclonal antibody
- Isotype:** IgG1
- Purified method:** Affinity purified
- Subcellular location:** Cytoplasm. Nucleus
- Reactivity:** H
- Applications:** WB
- Molecular Weight:** 37kDa
- UniProt number:** P62136
- GeneBank ID:** NM_001008709
- Gene symbol:** PP-1A; PPP1A; PP1alpha
- Alternate names:** PP-1A; PPP1A; MGC1674; MGC15877; PP1alpha; Protein Phosphatase 1 alpha; PPP1CA

For Research Use Only



Immunocytochemistry of HeLa cells using anti-PP1A (N-terminus) antibody diluted 1:50.



Western blot detection of PP1A(N-terminus) antibody in HepG2,MCF7&HeLa cell lysates using PP1A(N-terminus) antibody (1:1000 diluted). Predicted band size:37KDa. Observed band size:37KDa.