



# Tetrahydropapaverine hydrochloride

## Kinase Inhibitor

E1K S2367

**Kinase Inhibitor Name:** Tetrahydropapaverine hydrochloride

**Catalog Number:** E1KS2367

**Quantity:** 10mg

### 1. PHYSICAL AND CHEMICAL PROPERTIES

**M.Wt:** 379.88

**Formula:**  $C_{20}H_{25}NO_4 \cdot HCl$

**Solubility:** DMSO  $\geq 7$  mg/mL Water  $\geq 76$  mg/mL Ethanol  $< 1$  mg/mL

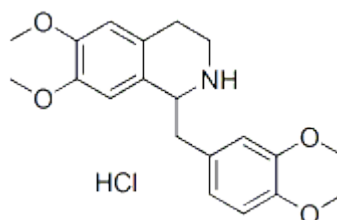
**Stability:** 2 years -20°C Powder

1 week -4°C in DMSO

1 month -80°C in DMSO

**CAS No.:** 6429-04-5

#### Molecular Structure:



### 2. Biological Activity

Tetrahydropapaverine, one of the TIQs and an analogue of salsolinol and tetrahydropapaveroline, has been reported to have neurotoxic effects on dopamine neurons. [1]

### 3. References:

The pharmacological and toxicological properties of this product have not been fully investigated. Exercise caution in use and handling. This product must not be used in humans.

**For Research Use Only**