



Rabbit anti V5-Tag Polyclonal Antibody

E16TPU006

Catalog Number: E16TPU006-050 , E16TPU006-100

Amount: 50 Tests ,100 Tests

Form of Antibody: Phosphate-buffered solution, pH 7.4, containing 0.09% sodium azide

Storage/Stability: Store at 4°C.DO NOT FREEZE. LIGHT SENSITIVE MATERIAL.

Description: Epitope tags are commonly used for labeling, detection and purification of recombinant proteins. Due to their small size, they are unlikely to affect the biochemical properties of the tagged fusion proteins. The V5 epitope tag is derived from a small epitope present on the P/V proteins of the paramyxovirus of simian virus (SV5). GeneMay's polyclonal antibody, is developed using synthetic C-GKPIPPLLGLDST conjugate to KLH as antigen. It recognizes V5-tagged fusion protein in different expression system.

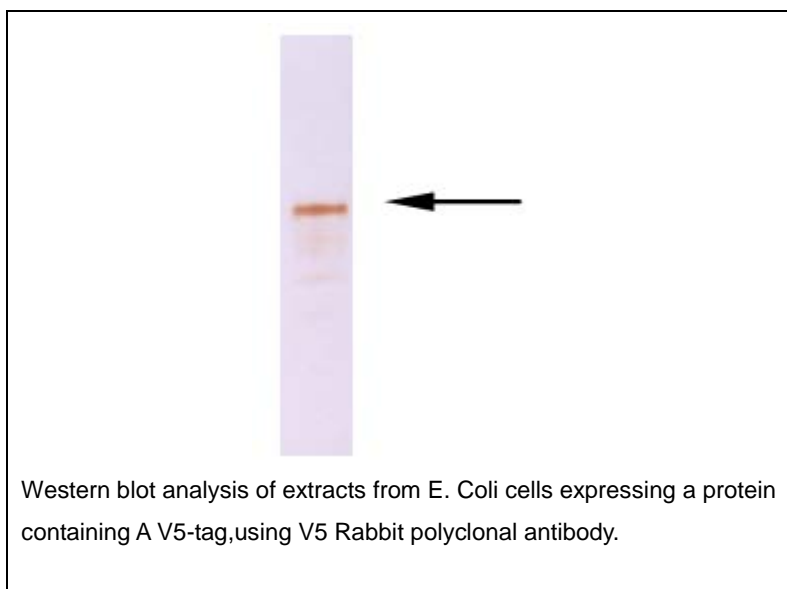
Isotype: Rabbit IgG

Clone : Polyclonal antibody

WB 1:1000

APPLICATION: ELISA 1:4000

IHC N/A



For Research Use Only