



## Carcinoembryonic Antigen(CEA )Antibody

E12-76010

**Catalog Number:** E12-76010

**Amount:** 100µg/100µl

**Clone Number** 10E1

**Background:** CEA is synthesised during development in the fetal gut, and is re-expressed in increased amounts in intestinal carcinomas and several other tumors. Antibodies to CEA are useful in identifying the origin of various metastatic adenocarcinomas and in distinguishing pulmonary adenocarcinomas (60 to 70% are CEA+) from pleural mesotheliomas (rarely or weakly CEA+).

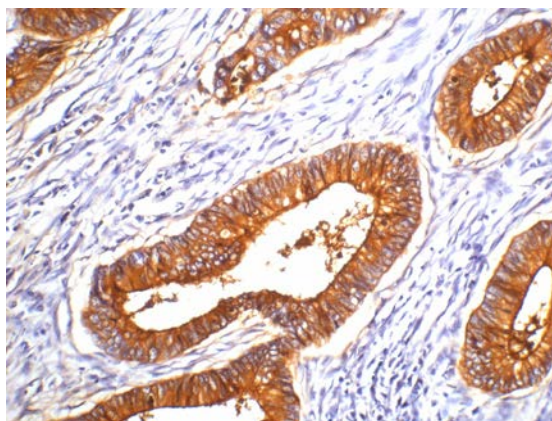
**Form of Antibody:** Mouse IgG1 in phosphate buffered saline (without  $Mg^{2+}$  and  $Ca^{2+}$ ), pH 7.4, 150mM NaCl, 0.02% sodium azide and 50% glycerol.

**Storage/Stability:** Store at -20°C/1 year

**Specificity/Sensitivity:** The CEA Mouse Monoclonal Antibody detects endogenous ~113KD CEA proteins.

**Reactivity:** Human

**Applications:** IHC: 1:200



IHC staining of human colon cancer tissue with CEA mouse mAb(10E1) diluted at 1:200.

**For Research Use Only**