



## Bcl-2 Mouse Monoclonal Antibody

E12-061

**Catalog Number:** E12-061

**Amount:** 100µg/100µl

**Clone Number:** 6B5

**Background:** BCL2 is an integral outer mitochondrial membrane protein that blocks the apoptotic death of some cells such as lymphocytes. Constitutive expression of BCL2, such as in the case of translocation of BCL2 to Ig heavy chain locus, is thought to be the cause of follicular lymphoma. BCL2 suppresses apoptosis in a variety of cell systems including factor-dependent lymphohematopoietic and neural cells. It regulates cell death by controlling the mitochondrial membrane permeability.

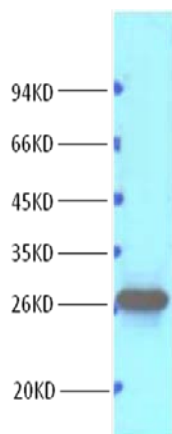
**Form of Antibody:** Mouse IgG1 in phosphate buffered saline (without  $Mg^{2+}$  and  $Ca^{2+}$ ), pH 7.4, 150mM NaCl, 0.02% sodium azide and 50% glycerol.

**Storage/Stability:** Store at -20°C/1 year

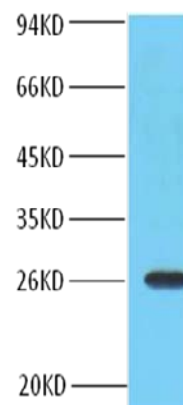
**Specificity/Sensitivity:** Bcl-2 antibody detects endogenous Bcl-2 proteins (26KD).

**Reactivity:** Human, Mouse, Rat

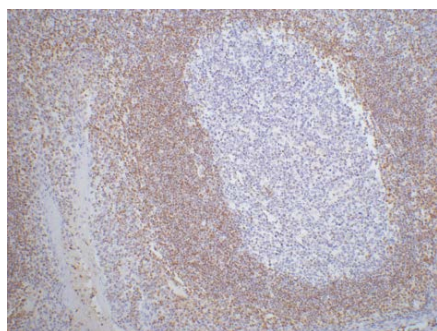
**Applications:** WB: 1:1,000~2,000      IHC: 1:200



Western blot analysis of HeLa with Bcl-2 mouse mAb(6B5) diluted at 1:1,000.



Western blot analysis of 3T3 with Bcl-2 mouse mAb(6B5) diluted at 1:1,000.



IHC staining of Human tonsil tissue paraffin-embedded with Bcl-2 mouse mAb (6B5) diluted at 1:200.

**For Research Use Only**