



GAPDH Mouse Monoclonal Antibody

E12-057

Catalog Number: E12-057

Amount: 100µg/100µl

Clone Number: 2B8

Background: Glyceraldehyde 3 phosphate dehydrogenase (GAPDH) is well known as one of the key enzymes involved in glycolysis. GAPDH is constitutively expressed in almost all tissues at high levels, therefore antibodies against GAPDH are useful as loading controls for Western Blotting. Some physiological factors, such as hypoxia and diabetes, increase GAPDH expression in certain cell types.

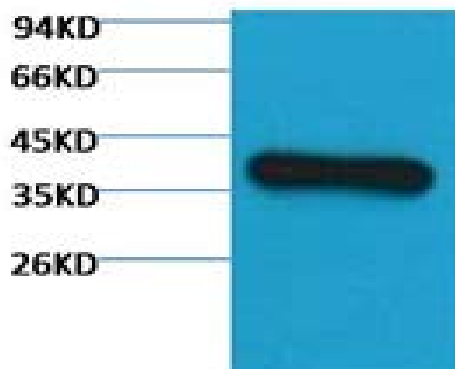
Form of Antibody: Mouse IgG1 in phosphate buffered saline (without Mg²⁺ and Ca²⁺), pH 7.4, 150mM NaCl, 0.02% sodium azide and 50% glycerol.

Storage/Stability: Store at -20°C/1 year. Do not aliquot the antibody.

Specificity/Sensitivity: The GAPDH antibody can detect endogenous GAPDH protein..

Reactivity: H, R, M, Mk, Dg, Ch, Hm, Rb, Pg, Sh

Applications: WB: 1:2,000-5,000 IHC: 1:100



Western blot analysis of HeLa with E12-057 diluted at 1:3,000.

For Research Use Only