



## Claudin 5 (Phospho-Tyr217) Antibody

E11-8319A

**Catalog Number:** E11-8319A

**Concentration:** 1mg/ml

**Swiss-Prot No.:** O00501

**Other Names:** CLD5; CLDN5; TMDVCF;

Transmembrane protein deleted in VCFS

**All Sites:** Human: Tyr217; Mouse: Tyr217; Rat: Tyr217

**Storage/Stability:** Store at -20°C/1 year

**Form of Antibody:** Rabbit IgG in phosphate buffered saline (without Mg<sup>2+</sup> and Ca<sup>2+</sup>), pH 7.4, 150mM NaCl, 0.02% sodium azide and 50% glycerol.

**Immunogen:** The antiserum was produced against synthesized phosphopeptide derived from human Claudin 5 around the phosphorylation site of tyrosine 217 (K-N-Y<sup>P</sup>-V).

**Purification:** The antibody was affinity-purified from rabbit antiserum by affinity-chromatography using epitope-specific phosphopeptide. The antibody against

non-phosphopeptide was removed by chromatography using non-phosphopeptide corresponding to the phosphorylation site.

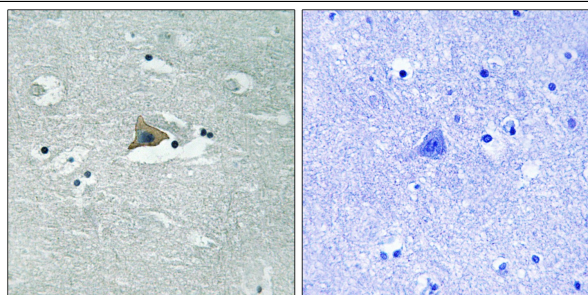
**Specificity:** Claudin 5 (Phospho-Tyr217) antibody detects endogenous levels of Claudin 5 only when phosphorylated at tyrosine 217.

**Reactivity:** Human (Identities = 100%, Positives = 100%); Mouse (Identities = 100%, Positives = 100%);  
Rat (Identities = 100%, Positives = 100%)

**Applications:** IHC: 1:50~1:100 ELISA: 1:1000

### References:

Sirotkin H., Genomics 42:245-251(1997).  
Collins J.E., Genome Biol. 5:RESEARCH84.1-RESEARCH84.11(2004).  
The MGC Project Team; Genome Res. 14:2121-2127(2004).



P-peptide - +

Immunohistochemistry analysis of paraffin-embedded human brain tissue using Claudin 5 (Phospho-Tyr217) antibody.

**For Research Use Only**