



p53 (Phospho-Ser376) Antibody

E11-8052A

Catalog Number: E11-8052A

Concentration: 1mg/ml

Swiss-Prot No.: P04637

Other Names: Antigen NY-CO-13; Cellular tumor antigen p53; Phosphoprotein p53; TP53; tumor protein p53; Tumor suppressor p53

All Sites: Human: Ser376; Mouse: Ser370; Rat: Ser374

Storage/Stability: Store at -20 °C/1 year

Form of Antibody: Rabbit IgG in phosphate buffered saline (without Mg²⁺ and Ca²⁺), pH 7.4, 150mM NaCl, 0.02% sodium azide and 50% glycerol.

Immunogen: The antiserum was produced against synthesized phosphopeptide derived from human p53 around the phosphorylation site of serine 376 (G-Q-S^P-T-S).

Purification: The antibody was affinity-purified from

rabbit antiserum by affinity-chromatography using epitope-specific phosphopeptide. The antibody against non-phosphopeptide was removed by chromatography using non-phosphopeptide corresponding to the phosphorylation site.

Specificity: p53 (Phospho-Ser376) antibody detects endogenous levels of p53 only when phosphorylated at serine 376.

Reactivity: Human (Identities = 100%, Positives = 100%);

Mouse (Identities = 93%, Positives = 100%);

Rat (Identities = 92%, Positives = 100%)

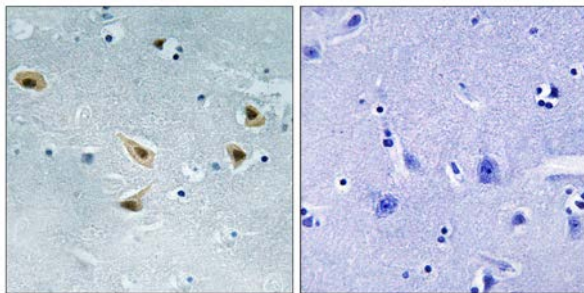
Applications: IHC: 1:50~1:100 ELISA: 1:1000

References:

Zakut-Houri R., EMBO J. 4:1251-1255(1985).

Lamb P., Mol. Cell. Biol. 6:1379-1385(1986).

Harlow E., Mol. Cell. Biol. 5:1601-1610(1985).

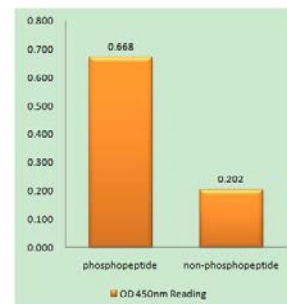


P-peptide

-

+

Immunohistochemistry analysis of paraffin-embedded human brain tissue using p53 (Phospho-Ser376) antibody.



p53 (Phospho-Ser376) antibody reacts with epitope-specific phosphopeptide and corresponding non-phosphopeptide. The absorbance readings at 450 nm are shown in the ELISA figure.

For Research Use Only