



IGF1R (Phospho-Tyr1346) Antibody

E11-8042A

Catalog Number: E11-8042A

Concentration: 1mg/ml

Swiss-Prot No.: P08069

Other Names: CD221; EC 2.7.10.1; IGF1R; Insulin-like growth factor I receptor precursor; kinase IGF1R

All Sites: Human: Tyr1346; Mouse: Tyr1352; Rat: Tyr1349

Storage/Stability: Store at -20 °C/1 year

Form of Antibody: Rabbit IgG in phosphate buffered saline (without Mg²⁺ and Ca²⁺), pH 7.4, 150mM NaCl, 0.02% sodium azide and 50% glycerol.

Immunogen: The antiserum was produced against synthesized phosphopeptide derived from human IGF1R around the phosphorylation site of tyrosine 1346 (Q-P-Y^P-A-H).

Purification: The antibody was affinity-purified from rabbit antiserum by affinity-chromatography using epitope-specific phosphopeptide. The antibody against non-phosphopeptide was removed by chromatography using non-phosphopeptide corresponding to the phosphorylation site.

Specificity: IGF1R (Phospho-Tyr1346) antibody detects endogenous levels of IGF1R only when phosphorylated at tyrosine 1346.

Reactivity: Human (Identities = 100%, Positives = 100%);
Mouse (Identities = 100%, Positives = 100%);
Rat (Identities = 100%, Positives = 100%)

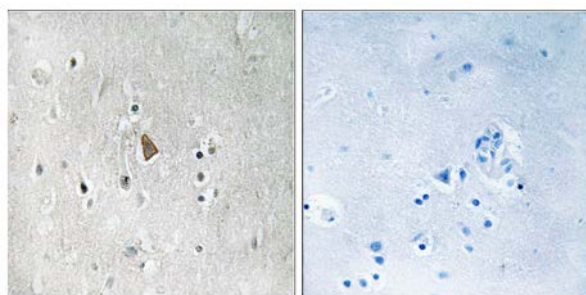
Applications: IHC: 1:50~1:100 ELISA: 1:40000

References:

Ullrich A., EMBO J. 5:2503-2512(1986).

Abbot A.M., J. Biol. Chem. 267:10759-10763(1992).

The MGC Project Team; Genome Res. 14:2121-2127(2004).

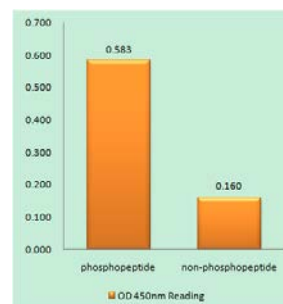


P-peptide

-

+

Immunohistochemistry analysis of paraffin-embedded human brain tissue using IGF1R (Phospho-Tyr1346) antibody.



IGF1R (Phospho-Tyr1346) antibody reacts with epitope-specific phosphopeptide and corresponding non-phosphopeptide. The absorbance readings at 450 nM are shown in the ELISA figure.

For Research Use Only