



SMO Antibody

E11-743G**Catalog Number:** E11-743G**Concentration:** 1mg/ml, 100ug/100uL**Swiss-Prot No.:** Q99835**Other Names:** Gx; SMOH; smoothened; smoothened homolog (Drosophila)**Storage/Stability:** Store at -20°C/1 year**Form of Antibody:** Rabbit IgG in phosphate buffered saline (without Mg²⁺ and Ca²⁺), pH 7.4, 150mM NaCl, 0.02% sodium azide and 50% glycerol.**Immunogen:** The antiserum was produced against synthesized peptide derived from internal of human SMO.**Purification:** The antibody was affinity-purified from

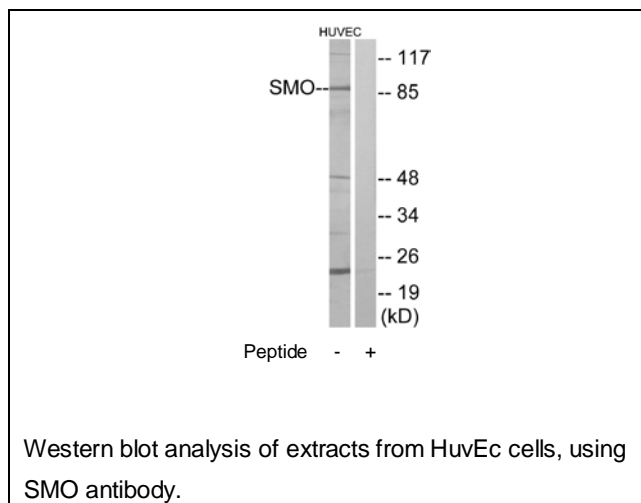
rabbit antiserum by affinity-chromatography using epitope-specific immunogen.

Specificity: SMO antibody detects endogenous levels of total SMO protein.**Reactivity:** Human, Mouse, Rat**Applications:** WB: 1:500~1:1000 ELISA: 1:10000**References:**

Stone D.M., Nature 384:129-134(1996).

Xie J., Nature 391:90-92(1998).

Jiang N., Submitted (JAN-1999) to the EMBL/GenBank/DDBJ databases.

**For Research Use Only**