



## PRLHR Antibody

**E11-728G****Catalog Number:** E11-728G**Concentration:** 1mg/ml, 100ug/100uL**Swiss-Prot No.:** P49683**Other Names:** G protein-coupled receptor 10; GR3; PRLHR; prolactin-releasing peptide receptor; PrRP receptor; PrRPR**Storage/Stability:** Store at -20°C/1 year**Form of Antibody:** Rabbit IgG in phosphate buffered saline (without Mg<sup>2+</sup> and Ca<sup>2+</sup>), pH 7.4, 150mM NaCl, 0.02% sodium azide and 50% glycerol.**Immunogen:** The antiserum was produced against synthesized peptide derived from internal of human

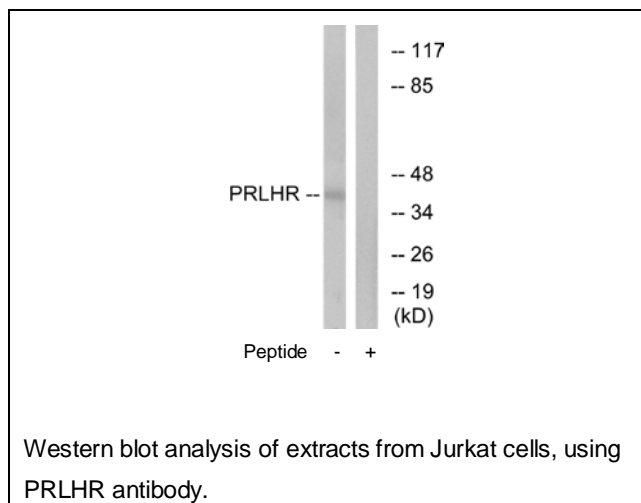
PRLHR.

**Purification:** The antibody was affinity-purified from rabbit antiserum by affinity-chromatography using epitope-specific immunogen.**Specificity:** PRLHR antibody detects endogenous levels of total PRLHR protein.**Reactivity:** Human, Mouse, Rat**Applications:** WB: 1:500~1:1000 ELISA: 1:20000**References:**

Marchese A., Genomics 29:335-344(1995).

Hinuma S., Nature 393:272-276(1998).

Ozawa A., Mol. Endocrinol. 16:785-798(2002).

**For Research Use Only**