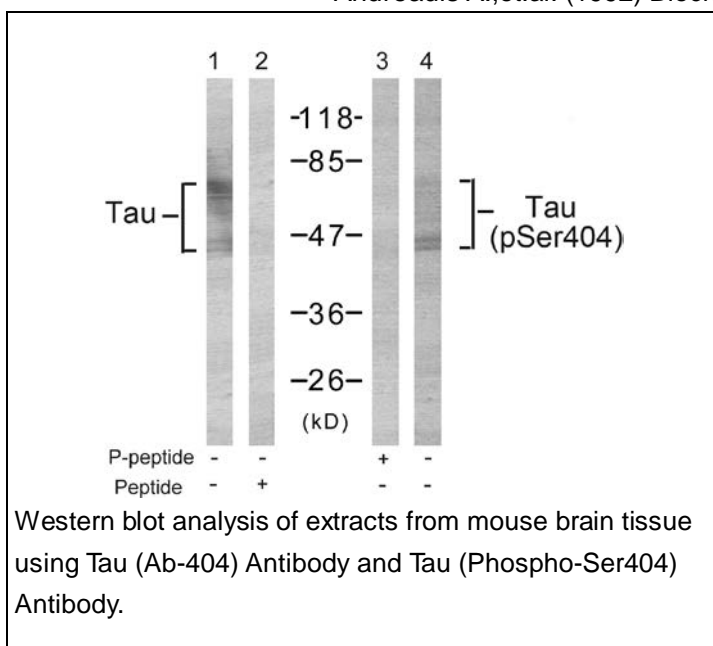




Tau (Phospho-Ser404) Antibody

E11-7242A

- Catalog Number:** E11-7242A
- Amount:** 100µg/100µl
- Form of Antibody:** Rabbit IgG in phosphate buffered saline (without Mg²⁺ and Ca²⁺), pH 7.4, 150mM NaCl, 0.02% sodium azide and 50% glycerol.
- Storage/Stability:** Store at -20°C/1 year
- Immunogen:** The antiserum was produced against synthesized phosphopeptide derived from human Tau around the phosphorylation site of Serine 404(D-T-S^P-P-R).
- Purification:** The antibody was affinity-purified from rabbit antiserum by affinity-chromatography using epitope-specific phosphopeptide. The antibody against non-phosphopeptide was removed by chromatography using non-phosphopeptide corresponding to the phosphorylation site.
- Specificity/Sensitivity:** Tau (Phospho-Ser404) Antibody detects endogenous levels of Tau only when phosphorylated at Serine404.
- Reactivity:** Human, Mouse, Rat
- Applications:** WB: 1:500~1:1000 ELISA: 1:20000
- Swiss-Prot No. :** P10636
- References:** Li G, Yin H, et.al .(2004) J Biol Chem ; 279(16): 15938-45.
Noble W, et al. (2003) Neuron ; 38(4): 555-65.
Giasson BI, et al.(2002).. Biochemistry; 41(51): 15376-87.
Lee G., et.al. (1989). Neuron 2:1615-1624.
Andreadis A.,et.al. (1992) Biochemistry 31:10626-10633.



For Research Use Only