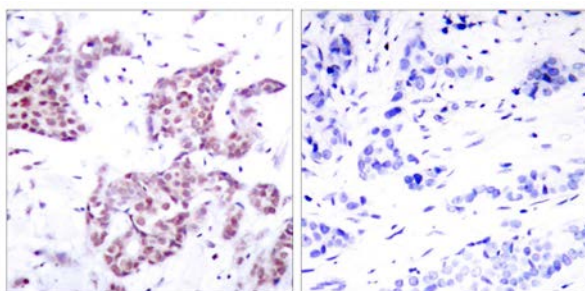




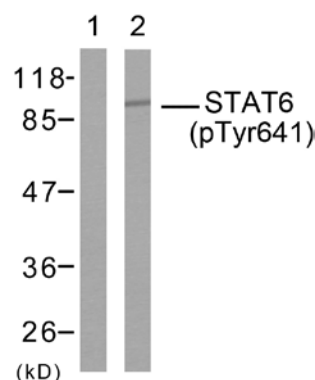
STAT6(Phospho-Tyr641) Antibody

E11-7229A

- Catalog Number:** E11-7229A
- Amount:** 100µg/100µl
- Form of Antibody:** Rabbit IgG in phosphate buffered saline (without Mg²⁺ and Ca²⁺), pH 7.4, 150mM NaCl, 0.02% sodium azide and 50% glycerol.
- Storage/Stability:** Store at -20°C/1 year
- Immunogen:** The antiserum was produced against synthesized phosphopeptide derived from human STAT6 around the phosphorylation site of Tyrosine 641(R-G-Y^P-V-P).
- Purification:** The antibody was affinity-purified from rabbit antiserum by affinity-chromatography using epitope-specific phosphopeptide. The antibody against non-phosphopeptide was removed by chromatography using non-phosphopeptide corresponding to the phosphorylation site.
- Specificity/Sensitivity:** STAT6(Phospho-Tyr641) Antibody detects endogenous levels of STAT6 only when phosphorylated at Tyrosine 641.
- Reactivity:** Human
- Applications:** WB: 1:500~1:1000 IHC: 1:50~1:100
ELISA: 1:10000
- Swiss-Prot No. :** P42226
- References:** Nelms K, et al. (1999) *Annu Rev Immunol.* 17:701-738.
Malabarba M G, et al. (1996) *Biochem. J.* 319:865-872.
Hou J, et al. (1994) *Science.* 265:1701-1706.
Quelle F W, et al. (1995) *Mol Cell Biol.* 15: 3336-3343.



Immunohistochemical analysis of paraffin-embedded breast carcinoma. Left: Using STAT6 (Phospho-Tyr641) Antibody; Right: The same antibody preincubated with synthesized phosphopeptide.



Western blot analysis using STAT6 (Phospho-Tyr641) Antibody: Line1: The extracts from HeLa cells; Line2: The extracts from HeLa cells treated with IL-4.

For Research Use Only