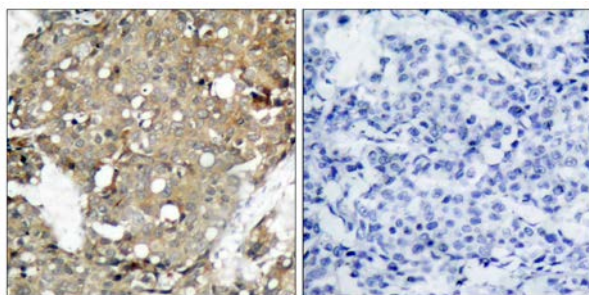




## STAT1 (Ab-727) Antibody

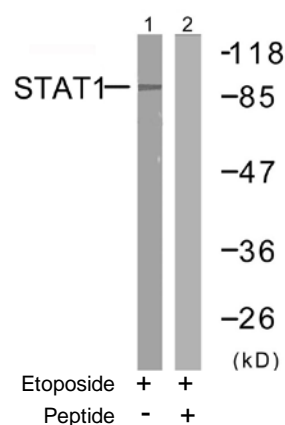
E11-7221B

- Catalog Number:** E11-7221B
- Amount:** 100µg/100µl
- Form of Antibody:** Rabbit IgG in phosphate buffered saline (without Mg<sup>2+</sup> and Ca<sup>2+</sup>), pH 7.4, 150mM NaCl, 0.02% sodium azide and 50% glycerol.
- Storage/Stability:** Store at -20 °C/1 year
- Immunogen:** The antiserum was produced against synthesized non-phosphopeptide derived from human STAT1 around the phosphorylation site of serine 727.
- Purification:** The antibody was affinity-purified from rabbit antiserum by affinity-chromatography using epitope-specific immunogen.
- Specificity/Sensitivity:** STAT1 (Ab-727) antibody detects endogenous levels of total STAT1 protein.
- Reactivity:** Human, Mouse, Rat
- Applications:** WB: 1:500~1:1000      IHC: 1:50~1:100  
ELISA: 1:10000
- Swiss-Prot No. :** P42224
- References:** Yuan ZM, et al. (1999) Nature.399 (6738): 814-817.  
Schindler C, et al. (1992) Proc. Natl. Acad. Sci. U.S.A 89:7836-7839.  
Strausberg R.L (2002). Proc. Natl. Acad. Sci. U.S.A. 99:16899-16903.  
Quelle F.W., (1995) J. Biol. Chem. 270:20775-20780.



Peptide                      -                      +

Immunohistochemical analysis of paraffin-embedded human breast carcinoma tissue using STAT1 (Ab-727) antibody (#B7221).



Western blot analysis of extracts from MCF7 cells using STAT1 (Ab-727) antibody (#B7221).