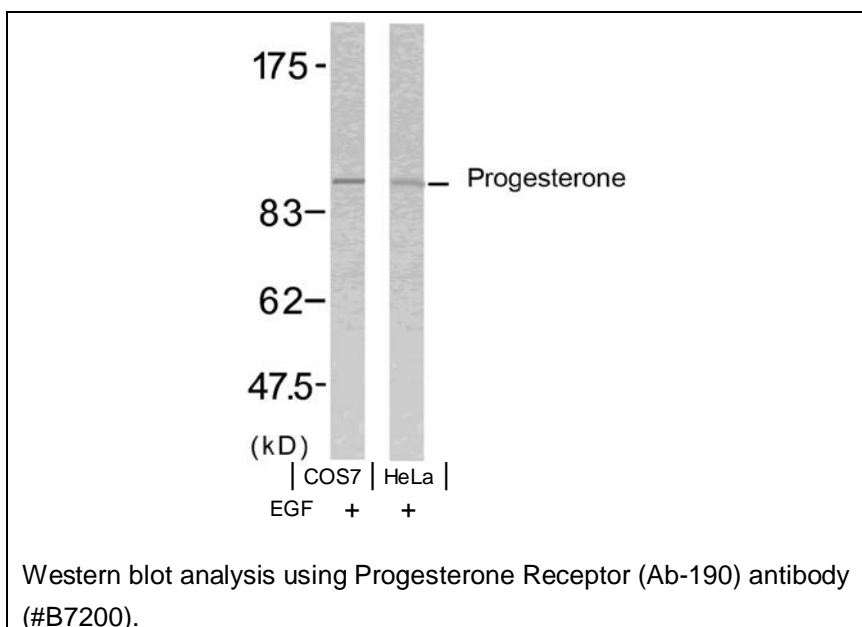




## Progesterone Receptor (Ab-190) Antibody

E11-7200B

- Catalog Number:** E11-7200B  
**Amount:** 100µg/100µl  
**Form of Antibody:** Rabbit IgG in phosphate buffered saline (without Mg<sup>2+</sup> and Ca<sup>2+</sup>), pH 7.4, 150mM NaCl, 0.02% sodium azide and 50% glycerol.  
**Storage/Stability:** Store at -20°C/1 year  
**Immunogen:** The antiserum was produced against synthesized non-phosphopeptide derived from human Progesterone Receptor around the phosphorylation site of serine190.  
**Purification:** The antibody was affinity-purified from rabbit antiserum by affinity-chromatography using epitope-specific immunogen.  
**Specificity/Sensitivity:** Progesterone Receptor (Ab-190) antibody detects endogenous levels of total Progesterone Receptor protein.  
**Reactivity:** Human  
**Applications:** WB: 1:500~1:1000      ELISA: 1:5000  
**Swiss-Prot No. :** P06401  
**References:** Narayanan R, et al. (2005) Mol Cell Biol; 25(8): 2885-98.  
Knotts TA, et al. (2001) J Biol Chem; 276(11): 8475-83.  
Clemm DL, et al. (2000) Mol Endocrinol; 14(1): 52-65.  
Zhang Y, et al. (1997) Mol Endocrinol; 11(6): 823-32.



**For Research Use Only**