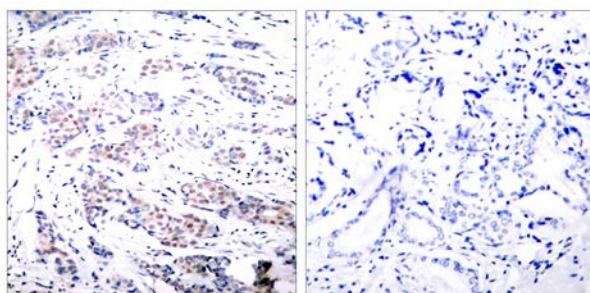




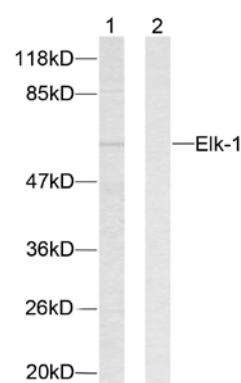
## Elk-1(Ab-383) Antibody

E11-7068B

- Catalog Number:** E11-7068B
- Amount:** 100µg/100µl
- Form of Antibody:** Rabbit IgG in phosphate buffered saline (without Mg<sup>2+</sup> and Ca<sup>2+</sup>), pH 7.4, 150mM NaCl, 0.02% sodium azide and 50% glycerol.
- Storage/Stability:** Store at -20°C/1 year
- Immunogen:** This antiserum was produced against synthesized non-phosphopeptide derived from human Elk-1 around the phosphorylation site of Serine 383.
- Purification:** The antibody was affinity-purified from rabbit antiserum by affinity-chromatography using epitope-specific immunogen.
- Specificity/Sensitivity:** Elk-1(Ab-383) Antibody detects endogenous levels of Elk-1 protein around Serine 383.
- Reactivity:** Human, Mouse, Rat
- Applications:** WB: 1:500~1:1000    IHC: 1:50~1:100    IF: 1:100~1:500  
ELISA: 1:10000    IP: Various Dilution
- Swiss-Prot No. :** P19419
- References:** Xing J, et al. (1996) Science. 273(5277): 959-963.  
Janknecht R, et al. (1993) EMBO J. 12(13): 5097-5104.  
Marais R, et al. (1993) Cell 73: 381-393.  
Kortenjann M, et al. (1994) Mol Cell Biol. 14: 4815-4824.  
Cavigelli M, et al. (1995) EMBO J. 14: 5957-5964.  
Whitmarsh A J, et al. (1995) Science. 269:403-407.



Immunohistochemical analysis of paraffin-embedded breast carcinoma. Left: Using Elk-1 (Ab-383) Antibody(#B7068); Right: Using the same antibody preincubated with synthesized peptide.



Western blot analysis of extracts from HeLa cells. Line1: Using Elk-1(Ab-383) Antibody (#B7068); Line2: Using the same antibody preincubated with synthesized peptide.

**For Research Use Only**