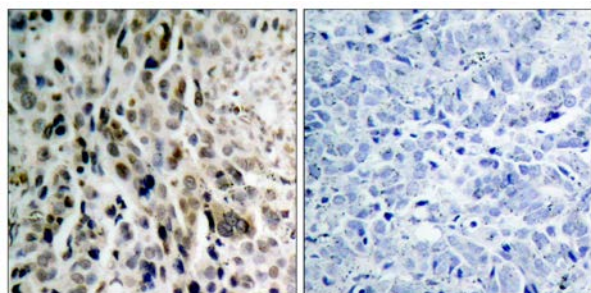




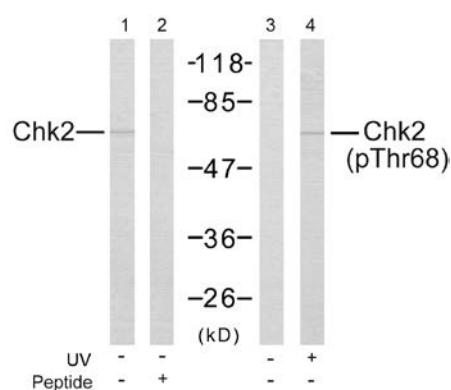
Chk2 (Phospho-Thr68) Antibody

E11-7044A

- Catalog Number:** E11-7044A
- Amount:** 100µg/100µl
- Form of Antibody:** Rabbit IgG in phosphate buffered saline (without Mg²⁺ and Ca²⁺), pH 7.4, 150mM NaCl, 0.02% sodium azide and 50% glycerol.
- Storage/Stability:** Store at -20°C/1 year
- Immunogen:** The antiserum was produced against synthesized phosphopeptide derived from human Chk2 around the phosphorylation site of Threonine 68 (V-S-T^P-Q-E).
- Purification:** The antibody was affinity-purified from rabbit antiserum by affinity-chromatography using epitope-specific phosphopeptide. The antibody against non-phosphopeptide was removed by chromatography using non-phosphopeptide corresponding to the phosphorylation site.
- Specificity/Sensitivity:** Chk2 (Phospho-Thr68) Antibody detects endogenous levels of Chk2 only when phosphorylated at Threonine 68.
- Reactivity:** Human, Mouse, Rat
- Applications:** WB: 1:500~1:1000 IHC: 1:50~1:100
ELISA: 1:20000
- Swiss-Prot No. :** O96017
- References:** Gorgoulis VG, et al. (2005) Nature; 434(7035): 907-13.
Falck J, et al. (2005) Nature; 434(7033): 605-11.
Jin ZH, et al. (2005) Oncogene; 24(12): 1973-81.
Li J, et al. (2005) J Biol Chem; 280(12): 12041-50.



Immunohistochemical analysis of paraffin-embedded lung carcinoma. Left: Using Chk2 (Phospho-Thr68) Antibody; Right: The same antibody preincubated with synthesized phosphopeptide.



Western blot analysis of the extracts from Jurkat cells untreated or treated with UV using Chk2 (Ab-68) Antibody and Chk2 (Phospho-Thr68) Antibody.

For Research Use Only