



BCL-2 (Phospho-Ser70) Antibody

E11-7025A

Catalog Number: E11-7025A

Concentration: 1mg/ml

Swiss-Prot No.: P10415

Other Names: Apoptosis regulator Bcl-2; B-cell CLL/lymphoma 2; BCL2

All Sites: Human: Ser70

Storage/Stability: Store at -20 °C/1 year

Form of Antibody: Rabbit IgG in phosphate buffered saline (without Mg²⁺ and Ca²⁺), pH 7.4, 150mM NaCl, 0.02% sodium azide and 50% glycerol.

Immunogen: The antiserum was produced against synthesized phosphopeptide derived from human BCL-2 around the phosphorylation site of serine 70 (R-T-S^P-P-L).

Purification: The antibody was affinity-purified from rabbit antiserum by affinity-chromatography using

epitope-specific phosphopeptide. The antibody against non-phosphopeptide was removed by chromatography using non-phosphopeptide corresponding to the phosphorylation site.

Specificity: BCL-2 (Phospho-Ser70) antibody detects endogenous levels of BCL-2 only when phosphorylated at serine 70.

Reactivity: Human

Applications: WB: 1:500~1:1000 IHC: 1:50~1:100

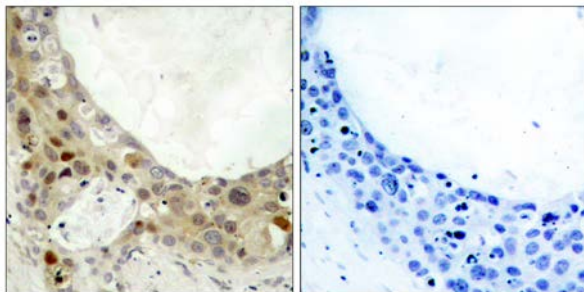
IP: Various Dilution ELISA: 1:10000

References:

Tsujimoto Y., Proc. Natl. Acad. Sci. U.S.A. 83:5214-5218(1986).

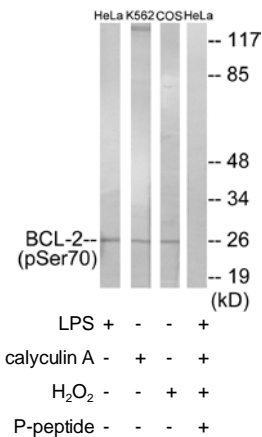
Eguchi Y., Nucleic Acids Res. 20:4187-4192(1992).

Cleary M.L., Cell 47:19-28(1986).



P-peptide - +

Immunohistochemistry analysis of paraffin-embedded human breast carcinoma tissue using BCL-2 (Phospho-Ser70) antibody.



Western blot analysis of extracts from HeLa cells treated with LPS (40nM, 30mins), K562 cells treated with calyculin A (50ng/ml, 30mins), COS-7 cells treated with H₂O₂ (1ng/ml, 15mins), using BCL-2 (Phospho-Ser70) antibody.

For Research Use Only