



## TOLLIP Antibody

E11-21626C

**Catalog Number:** E11-21626C

**Concentration:** 1mg/ml

**Swiss-Prot No.:** Q9H0E2

**Other Names:** adapter protein; FLJ33531; IL-1RAcPIP; TOLLIP; toll interacting protein; Toll-interacting protein; TOLLIP

**Storage/Stability:** Store at -20 °C/1 year

**Form of Antibody:** Rabbit IgG in phosphate buffered saline (without Mg<sup>2+</sup> and Ca<sup>2+</sup>), pH 7.4, 150mM NaCl, 0.02% sodium azide and 50% glycerol.

**Immunogen:** The antiserum was produced against synthesized peptide derived from Internal of human

TOLLIP.

**Purification:** The antibody was affinity-purified from rabbit antiserum by affinity-chromatography using epitope-specific immunogen.

**Specificity:** TOLLIP antibody detects endogenous levels of total TOLLIP protein.

**Reactivity:** Human

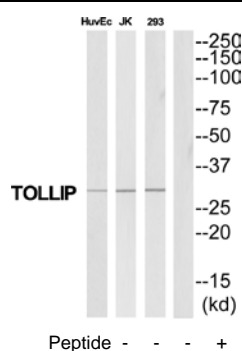
**Applications:** WB: 1:500~1:1000 ELISA: 1:40000

**References:**

Burns K., Nat. Cell Biol. 2:346-351(2000).

Wiemann S., Genome Res. 11:422-435(2001).

Zhang G., J. Biol. Chem. 277:7059-7065(2002).



Western blot analysis of extracts from HuvEc/Jurkat/293 cells, using TOLLIP antibody.

**For Research Use Only**