



RRM2B Antibody

E11-21431C

Catalog Number: E11-21431C

Concentration: 1mg/ml

Swiss-Prot No.: Q7LG56

Other Names: DKFZp686M05248; MGC102856; MGC42116; p53-inducible ribonucleotide reductase small subunit 2 homolog; p53-inducible ribonucleotide reductase small subunit 2-like protein; P53R2;

Ribonucleoside-diphosphate reductase subunit M2 B; ribonucleotide reductase M2 B (TP53 inducible); RIR2B; RRM2B; TP53-inducible ribonucleotide reductase M2 B

Storage/Stability: Store at -20 °C/1 year

Form of Antibody: Rabbit IgG in phosphate buffered saline (without Mg²⁺ and Ca²⁺), pH 7.4, 150mM NaCl, 0.02% sodium azide and 50% glycerol.

Immunogen: The antiserum was produced against synthesized peptide derived from Internal of human RRM2B.

Purification: The antibody was affinity-purified from rabbit antiserum by affinity-chromatography using epitope-specific immunogen.

Specificity: RRM2B antibody detects endogenous levels of total RRM2B protein.

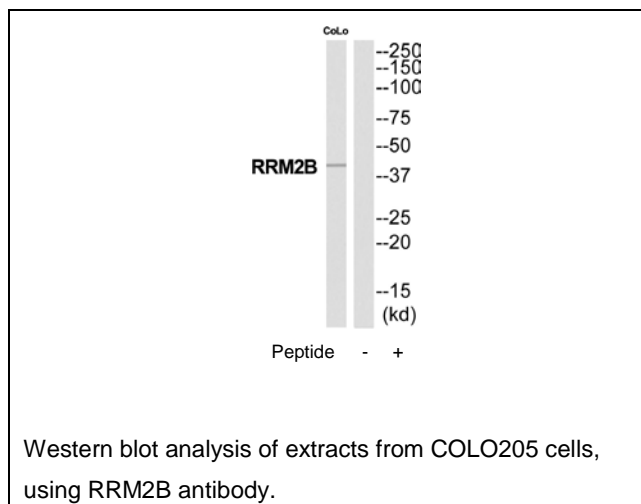
Reactivity: Human; Mouse; Rat

Applications: WB: 1:500~1:1000 ELISA: 1:40000

References:

Tanaka H., Nature 404:42-49(2000).

Ugai H., Submitted (MAR-2004) to the EMBL/GenBank/DDBJ databases.



For Research Use Only