



SLC39A2 Antibody

E11-19629C

Catalog Number: E11- 19629C

Concentration: 1mg/ml, 100ug/100ul

Swiss-Prot No.: Q9NP94

Other Names: Zinc transporter ZIP2; Zrt- and Irt-like protein 2; ZIP-2; hZIP2; Solute carrier family 39 member 2; Eti-1; 6A1; ZIP2

Storage/Stability: Store at -20°C/1 year

Form of Antibody: Rabbit IgG in phosphate buffered saline (without Mg²⁺ and Ca²⁺), pH 7.4, 150mM NaCl, 0.02% sodium azide and 50% glycerol.

Immunogen: The antiserum was produced against synthesized peptide derived from internal of human SLC39A2.

Purification: The antibody was affinity-purified from rabbit antiserum by affinity-chromatography using epitope-specific immunogen.

Specificity: SLC39A2 antibody detects endogenous levels of total SLC39A2 protein.

Reactivity: Human

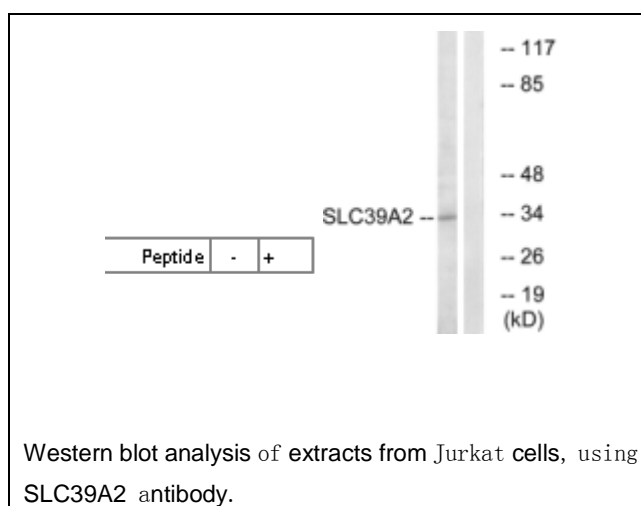
Applications: WB: 1:500~1:1000 ELISA: 1:10000

References:

Yamaguchi S.; Kokubyo Gakkai Zasshi 62:78-93(1995).

Gaither L.A., J. Biol. Chem. 275:5560-5564(2000).

The MGC Project Team; Genome Res. 14:2121-2127(2004).



For Research Use Only