



## NXF3 Antibody

E11-17132C

**Catalog Number:** E11-17132C

**Concentration:** 1mg/ml, 100ug/100uL

**Swiss-Prot No.:** Q9H4D5

**Other Names:** nuclear RNA export factor 3; TAP-like 3; TAPL-3; TAPL3

**Storage/Stability:** Store at -20°C/1 year

**Form of Antibody:** Rabbit IgG in phosphate buffered saline (without Mg<sup>2+</sup> and Ca<sup>2+</sup>), pH 7.4, 150mM NaCl, 0.02% sodium azide and 50% glycerol.

**Immunogen:** The antiserum was produced against synthesized peptide derived from internal of human NXF3.

**Purification:** The antibody was affinity-purified from rabbit antiserum by affinity-chromatography using epitope-specific immunogen.

**Specificity:** NXF3 antibody detects endogenous levels of total NXF3 protein.

**Reactivity:** Human

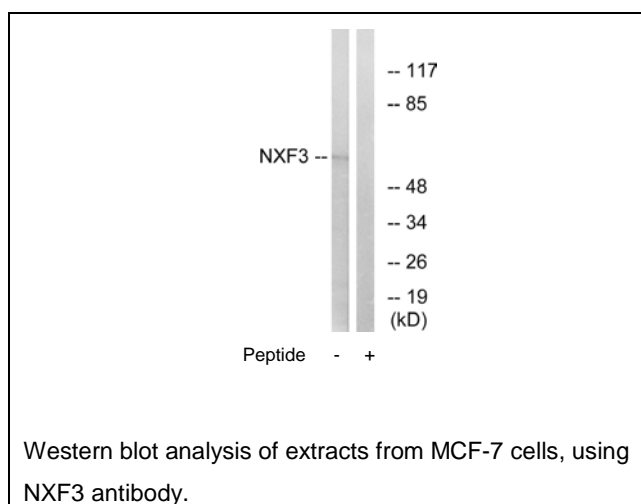
**Applications:** WB: 1:500~1:1000 ELISA: 1:40000

**References:**

Herold A., Mol. Cell. Biol. 20:8996-9008(2000).

Yang J., Mol. Cell 8:397-406(2001).

The MGC Project Team; Genome Res. 14:2121-2127(2004).



**For Research Use Only**