



NDUFA4L2 Antibody

E11-16822C

Catalog Number: E11-16822C

Concentration: 1mg/ml,100ug/100uL

Swiss-Prot No.: Q9NRX3

Other Names: NADH dehydrogenase [ubiquinone] 1 alpha subcomplex subunit 4-like 2; NADH-ubiquinone oxidoreductase MLRQ subunit homolog; NUOMS; NDUFA4L2

Storage/Stability: Store at -20°C/1 year

Form of Antibody: Rabbit IgG in phosphate buffered saline (without Mg²⁺ and Ca²⁺), pH 7.4, 150mM NaCl, 0.02% sodium azide and 50% glycerol.

Immunogen: The antiserum was produced against synthesized peptide derived from internal of human NDUFA4L2.

Purification: The antibody was affinity-purified from rabbit antiserum by affinity-chromatography using epitope-specific immunogen.

Specificity: NDUFA4L2 antibody detects endogenous levels of total NDUFA4L2 protein.

Reactivity: Human, Mouse

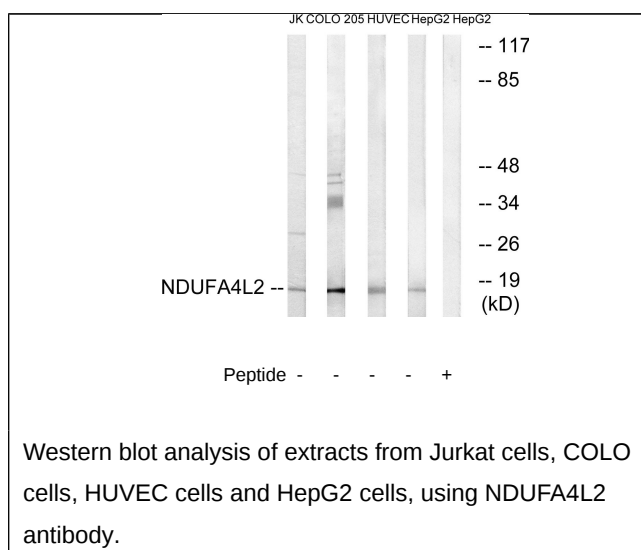
Applications: WB: 1:500~1:1000 ELISA: 1:20000

References:

Hu R.-M., *Proc. Natl. Acad. Sci. U.S.A.* 97:9543-9548(2000).

Ebert L., Submitted (JUN-2004) to the EMBL/GenBank/DDBJ databases.

The MGC Project Team; *Genome Res.* 14:2121-2127(2004).



For Research Use Only