



## KIF20B Antibody

E11-16700C

**Catalog Number:** E11-16700C

**Concentration:** 1mg/ml, 100ug/100uL

**Swiss-Prot No.:** Q96Q89

**Other Names:** M-phase phosphoprotein 1; MPP1; Kinesin-related motor interacting with PIN1; Cancer/testis antigen 90; CT90

**Storage/Stability:** Store at -20°C/1 year

**Form of Antibody:** Rabbit IgG in phosphate buffered saline (without Mg<sup>2+</sup> and Ca<sup>2+</sup>), pH 7.4, 150mM NaCl, 0.02% sodium azide and 50% glycerol.

**Immunogen:** The antiserum was produced against synthesized peptide derived from C-terminal of human KIF20B.

**Purification:** The antibody was affinity-purified from rabbit antiserum by affinity-chromatography using epitope-specific immunogen.

**Specificity:** KIF20B antibody detects endogenous levels of total KIF20B protein.

**Reactivity:** Human (Identities = 100%, Positives = 100%)

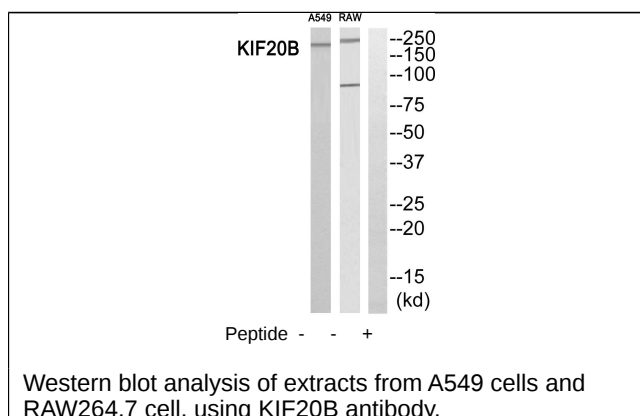
**Applications:** WB: 1:500~1:1000 ELISA: 1:40000

**References:**

[Kamimoto T., J. Biol. Chem. 276:37520-37528\(2001\).](#)

[Wiemann S., Genome Res. 11:422-435\(2001\).](#)

[Ota T., Nat. Genet. 36:40-45\(2004\).](#)



**For Research Use Only**